



European  
Commission

JRC SCIENTIFIC AND POLICY REPORTS

# Scientific, Technical and Economic Committee for Fisheries (STECF)

-

## Monitoring the performance of the Common Fisheries Policy (STECF-16-05)

-

## CORRIGENDUM to (STECF-16-03)

Edited by Ernesto Jardim, Iago Mosqueira, Chato Osio, Finlay Scott, John Casey and  
Norman Graham

The STECF-16-03 and CORRIGENDUM STECF-16-05 were released in March 2016

Report EUR 27758 EN

European Commission  
Joint Research Centre (JRC)  
Institute for the Protection and Security of the Citizen (IPSC)

Contact information  
STECF secretariat  
Address: Maritime Affairs Unit, Via Enrico Fermi 2749, 21027 Ispra VA, Italy  
E-mail: [stecf-secretariat@jrc.ec.europa.eu](mailto:stecf-secretariat@jrc.ec.europa.eu)  
Tel.: 0039 0332 789343  
Fax: 0039 0332 789658

JRC Science Hub  
<https://ec.europa.eu/jrc>

#### Legal Notice

This publication is a Science and Policy Report by the Joint Research Centre, the European Commission's in-house science service. It aims to provide evidence-based scientific support to the European policy-making process. The scientific output expressed does not imply a policy position of the European Commission. Neither the European Commission nor any person acting on behalf of the Commission is responsible for the use which might be made of this publication.

JRC 100945  
EUR 27758 EN  
ISBN 978-92-79-57604-1  
EUR – Scientific and Technical Research series – ISSN 1831-9424  
ISSN 2467-0715  
doi:10.2788/38324  
Luxembourg: Publications Office of the European Union, 2016  
© European Union, 2016  
Reproduction is authorised provided the source is acknowledged

How to cite this report: Reports of the Scientific, Technical and Economic Committee for Fisheries (STECF) – Monitoring the performance of the Common Fisheries Policy (STECF-16-05) – CORRIGENDUM to STECF-16-03. 2016. Publications Office of the European Union, Luxembourg, EUR 27758 EN, JRC 100945, 60 pp.

#### Abstract

An ad hoc Expert Group on 'Monitoring the performance of the Common Fisheries Policy' composed of JRC experts was held on 1-5<sup>th</sup> February 2016 at JRC, Ispra, Italy. The ad hoc report was finalized and subsequently reviewed by the STECF by written procedure during March 2016. This report is a CORRIGENDUM to the report STECF-16-03.

## TABLE OF CONTENTS

Monitoring the performance of the Common Fisheries Policy (STECF-16-05) – CORRIGENDUM to STECF-16-03.....	4
Background.....	4
Terms of reference.....	4
STECF Observations.....	4
STECF conclusions.....	8
References.....	8
Contact details of STECF members and adhoc Expert Group.....	9
Annex I - Report to the STECF.....	14

**SCIENTIFIC, TECHNICAL AND ECONOMIC COMMITTEE FOR FISHERIES  
(STECF)**

**MONITORING THE PERFORMANCE OF THE COMMON FISHERIES POLICY  
(STECF-16-05) – CORRIGENDUM TO STECF-16-03**

**The STECF review and adoption of the report of the ad hoc Expert group to monitor the performance of the Common Fisheries Policy was undertaken during February 2016.**

**Background**

Article 50 of the Common Fisheries Policy (CFP; Regulation (EU) No 1380/2013 of the European Parliament and of the Council of 11 December 2013) stipulates:

*"The Commission shall report annually to the European Parliament and to the Council on the progress on achieving maximum sustainable yield and on the situation of fish stocks, as early as possible following the adoption of the yearly Council Regulation fixing the fishing opportunities available in Union waters and, in certain non-Union waters, to Union vessels."*

To facilitate such a report, an ad hoc Expert Group was convened from 1 - 5 February 2016 at JRC, Ispra, Italy to address the following Terms of Reference and to prepare a report for review by the STECF.

**Terms of reference**

STECF is requested to report on progress in achieving MSY objectives in line with CFP.

**STECF Observations**

The Report of the ad hoc Expert Group to the STECF is given in Annex I below.

STECF notes that to address the above Terms of Reference the ad hoc Expert group has to a large extent followed the protocol adopted by the STECF in November 2015 (Jardim et al, 2015). However, as a result of problems relating to the availability of stock assessments in the Mediterranean region, and to avoid producing misleading or erroneous trends for some indicators of CFP performance, the protocol was not strictly adhered to.

The problems identified primarily relate to the variation in number of Mediterranean stocks for which annual estimates of  $F$  and  $F_{MSY}$  were available. Consequently, only a

model-based indicator of  $F_{MSY}$  was computed for the Mediterranean region. Such model-based indicators were developed to deal with instability in the sampling frames, both in terms of the number and identity of stocks for which annual estimates of  $F_{MSY}$  were available.

### **ICES Area – trends in CFP monitoring indicators**

Based on the results in the Report of the ad hoc Expert group, STECF notes the following:

#### *The ICES area sampling frame*

The stocks that are included in the sampling frame for the ICES area are those stocks for which ICES provides advice on fishing opportunities (TACs) and for which from the most recent ICES assessments, estimates for  $F/F_{MSY}$  were available. Over the period 2003-2014 the number of stocks in the sampling frame has remained relatively stable, ranging from 56 (2004) to 62 (2013).

#### *Fishing mortality relative to $F_{MSY}$*

Two indicators are presented in the report of the Expert group; the number of stocks for which fishing mortality is greater than  $F_{MSY}$  and the number of stocks for which fishing mortality is less than  $F_{MSY}$ . Over the period 2003-2014, the number of stocks in the sampling frame for which annual estimates of fishing mortality exceeded  $F_{MSY}$  shows an overall declining trend indicating a gradual reduction in exploitation rates for the ICES area. A similar declining trend can be observed for the regional analyses for the Baltic Sea, greater North Sea, Western waters and for widely distributed stocks. As expected, for the same areas, the number of stocks for which annual estimates of fishing mortality were less than  $F_{MSY}$  shows a generally increasing trend.

Trends in both indicators suggest a general reduction in exploitation rates for stocks in the ICES area. Nevertheless, in 2014, the number of stocks for which  $F$  exceeds  $F_{MSY}$  is about 50% of the total number of stocks for which this indicator can be computed.

#### *Number of stocks outside safe biological limits*

Over the period 2003-2014, the annual number of stocks assessed to be outside safe biological limits<sup>1</sup> (SBL) has varied between 28 and 37 stocks and overall shows a weakly declining trend, with a minimum in 2011. Correspondingly, the annual number of stocks assessed to be within SBL<sup>2</sup> varies between 15 and 24 stocks and shows a weakly increasing trend, with a maximum in 2011.

The number of stocks within SBL in 2014 is about 40% of the total number of stocks for which this indicator can be computed.

#### *Ratio of $F/F_{MSY}$*

The annual arithmetic mean ratio of  $F/F_{MSY}$  for all stocks in the sampling frame is used to indicate the trend in overall exploitation rate in the ICES area and by region. Over the period 2003-2013, the overall trend in the mean  $F/F_{MSY}$  ratio for the ICES area as a

---

<sup>1</sup> Outside safe biological limits means that SSB is less than  $B_{pa}$  (where  $B_{pa}$  is defined) or  $F$  is greater than  $F_{MSY}$  (where  $F_{MSY}$  is defined).

<sup>2</sup> Within safe biological limits means that SSB is greater than  $B_{pa}$  (where  $B_{pa}$  is defined) and  $F$  is less than  $F_{MSY}$  (where  $F_{MSY}$  is defined).

whole is downward. Similarly, a declining trend can also be observed for stocks in each of the regions; Baltic Sea, Greater North Sea, Western European waters and for widely distributed stocks. The model based indicator of the trend in  $F/F_{MSY}$  shows a similar downward trend over the same period.

In 2014, both the arithmetic mean and the model-based indicators show an increase in  $F/F_{MSY}$  of approximately 9% compared to 2013.

Although both indicators show similar trends, the annual arithmetic mean estimates are higher than the model-based estimates. The arithmetic mean indicator for  $F/F_{MSY}$  remains above a value of 1.0, while the median value for the model based indicator for  $F/F_{MSY}$  stabilizes around 1.0 after 2010. The difference between the two sets of indicator values is due to the fact that the arithmetic mean estimates are sensitive to outliers and are inflated by some large values (see Figure 12). The model based indicator deals with this problem by using a log link function in the Generalized Linear Mixed Model.

For the above reason, STECF considers that the model-based indicator values for  $F/F_{MSY}$  should be adopted as the benchmark indicator time-series. While the model-based time series indicates that the median exploitation rate for the stocks in the sampling frame is around the  $F_{MSY}$  target, such an observation does not mean that the  $F_{MSY}$  target has been reached for all stocks. It is important to note that for all stocks to be exploited at rates corresponding to  $F_{MSY}$ , the median value would need to be much lower than current estimates.

The above results are generally in line with those reported in the 2015 CFP monitoring report and indicate a reduction in overall exploitation rate for the ICES area. However, the annual estimates for each of the indicators differ slightly between years because of changes to the composition and number of stocks in the sampling frame.

#### *Changes in coverage of advice*

The EWG report lists the number and proportion of TACs for which scientific advice is provided by ICES.

STECF notes that in several cases, the boundaries of the stocks for which there are assessments are not aligned with TAC management areas. For example, northern hake is assessed as a single stock but the fishing opportunities for the stock are allocated over 5 different management areas, resulting in 5 TACs. Alternatively, a TAC is set for North Sea *Nephrops* which is assessed separately by functional unit, and three separate assessments are taken into account to arrive at a single TAC for all functional units combined. For the calculation of this indicator, a TAC was considered to be covered by a stock assessment, when at least one of its divisions matched the spatial distribution of a stock for which the required reference points have been estimated. Such an approach tends to overestimate the assessment coverage as the full spatial distribution of the stocks and management units is not accounted for.

STECF notes that for the EU coastal waters in the NE Atlantic, there are 238 TACs (combination of species and area), also referred to as "management units". Of which 58% are covered by stocks that have  $F/F_{MSY}$  estimates (59 stocks covering 138 management units) and 51% by stocks that have  $SSB/B_{REF}$  (52 stocks covering 121 management units).

### **Mediterranean area**

#### *The Mediterranean area sampling frame*

According to the protocol for computing indicators for CFP monitoring (Jardim et al, 2015), the sampling frame for Mediterranean stocks should include stocks for species which are subject to a legal minimum conservation reference size (MCRS), as prescribed in ANNEX III of the Mediterranean Regulation (EC 1967/2006). While the expert group has adopted this definition, it is important to note that such an approach excludes stocks of some important commercial species which form the target species for some fisheries (e.g. all shrimps except *Parapenaeus longirostris*, anglerfish, octopus) which are routinely assessed and some species that are deemed not to be important fishery target species or that are never assessed, like many coastal species (*Diplodus* spp., *Pagrus* spp., *Polyprion*).

In detail, the sampling frame lists 27 species of which only 8 have been assessed at least once in all the STECF MED assessment EWGs (*Engraulis encrasicolus*, *Parapenaeus longirostris*, *Merluccius merluccius*, *Mullus* spp, *Nephrops norvegicus*, *Pagellus erythrinus*, *Sardina pilchardus* and *Solea vulgaris*). Furthermore, 6 species that are assessed (*Lophius budegassa*, *Aristeus antennatus*, *Aristaeomorpha foliacea*, *Spicara smaris*, *Squilla mantis* and *Micromesistius poutassou*) are excluded from the sampling frame.

STECF considers that the basis for the current sampling frame needs to be revised so that the results of assessments for a greater number of stocks can be incorporated in order to provide informative indicator values. Nevertheless, the number of stocks to be included needs to be kept to a manageable level to avoid overloading the already demanding workload of the EWG undertaking assessments for stocks in the Mediterranean. This issue needs to be addressed by the Mediterranean assessment EWG during 2016, in order to incorporate a revised sampling frame in the 2017 CFP indicators report.

STECF notes that because only 15 of the 30 stock assessments carried out in 2015 by STECF EWGs undertaking assessments of Mediterranean stocks have been reviewed and accepted by the STECF, of which only 2 fall within the sampling frame, the STECF agrees with the decision of the ad hoc Expert Group to exclude the results of 2014 from the time series used to compute the CFP monitoring indicators.

Due to the varying availability of stock assessment results over time for the Mediterranean area, some of the CFP monitoring indicators give a wholly misleading impression of any trends in such indicators over time. Using all of the stock assessments undertaken over the period 2003-2013 (data deliberately not shown), it appears that in the most recent year, the number of stocks for which  $F$  exceeds  $F_{MSY}$  has fallen dramatically. However, such an observation simply reflects the variation in the number of stock assessments carried out in different years throughout the time series 2003-2013 e.g. the results from 16-18 assessments were available for the years 2006-2012, but only 9 for 2013, the majority of which (8) indicated that  $F$  was above  $F_{MSY}$ . The STECF agrees with the ad hoc Expert Group that on the grounds that they are likely to give a misleading impression of the trend in the status of the stocks, it is not appropriate to compute the time series of annual values for the following indicators:

- Number of stocks for which  $F$  exceed  $F_{MSY}$ .
- Number of stocks for which  $F$  is equal to or less than  $F_{MSY}$ .
- Number of stocks outside safe biological limits.
- Number of stocks within safe biological limits

Hence, STECF considers that the only indicator likely to be indicative of the overall trend in exploitation status is the trend in the annual values for  $F/F_{MSY}$  from stock assessments

carried out in 2012-2014. For the reasons outlined in the section above concerning trends in  $F/F_{MSY}$  for the ICES stocks, STECF considers that the model-based estimates of  $F/F_{MSY}$  values are likely to be more representative of the overall trend in exploitation status for stocks in the Mediterranean and hence only the model-based series is presented in the report.

The results indicate that over the period 2003-2013, the annual values for  $F/F_{MSY}$  for all stocks combined shows a decline from 2003-2005 followed by a gradually increasing trend, indicating that the overall exploitation rate on those stocks included in the analysis has been slowly increasing since 2005. A further important observation is that the median values of the annual estimates of  $F/F_{MSY}$  are generally above 2.0 throughout the time period implying that overall fishing mortality rates need to be reduced by more than 50% if the  $F_{MSY}$  target is to be achieved.

### **STECF conclusions**

STECF concludes that because of the issues raised by the expert group in relation to the existing protocol (Jardim, et al, 2015), together with additional methodological matters, there is a need for STECF to review procedures and methods ahead of the 2017 CFP monitoring report and revise the protocol accordingly.

STECF concludes that the approach of the ad hoc Expert group was appropriate and the Terms of Reference have been addressed appropriately. The Report is logically presented and STECF concludes that the data and information presented, although not as comprehensive as originally envisaged, represent the best currently available and can be used by the Commission as a basis to fulfil its obligations under Article 50 of the Common Fisheries Policy (Regulation (EU) No 1380/2013 of the European Parliament and of the Council of 11 December 2013).

### **References**

Jardim, E., Mosqueira, I., Osio, G.C. and Scott, F. 2015. Common Fisheries Policy monitoring Protocol for computing indicators: EUR 27566 EN; doi:10.2788/560953



## Contact details of STECF members and adhoc Expert Group

1 - Information on STECF members and invited experts' affiliations is displayed for information only. In some instances the details given below for STECF members may differ from that provided in Commission COMMISSION DECISION of 27 October 2010 on the appointment of members of the STECF (2010/C 292/04) as some members' employment details may have changed or have been subject to organisational changes in their main place of employment. In any case, as outlined in Article 13 of the Commission Decision (2005/629/EU and 2010/74/EU) on STECF, Members of the STECF, invited experts, and JRC experts shall act independently of Member States or stakeholders. In the context of the STECF work, the committee members and other experts do not represent the institutions/bodies they are affiliated to in their daily jobs. STECF members and invited experts make declarations of commitment (yearly for STECF members) to act independently in the public interest of the European Union. STECF members and experts also declare at each meeting of the STECF and of its Expert Working Groups any specific interest which might be considered prejudicial to their independence in relation to specific items on the agenda. These declarations are displayed on the public meeting's website if experts explicitly authorized the JRC to do so in accordance with EU legislation on the protection of personnel data. For more information: <http://stecf.jrc.ec.europa.eu/adm-declarations>

### STECF members:

Name	Address <sup>1</sup>	Tel.	Email
<b>STECF members</b>			
Abella, J. Alvaro (vice-chair)	ARPAT – AREA MARE Agenzia Regionale per la Protezione Ambientale della Toscana Articolazione Funzionale RIBM Risorse Ittiche e Biodiversità Marina Via Marradi 114, 57126 Livorno – Italia	Tel. 0039-0555-3206956	<a href="mailto:alvarojuan.abella@arpat.toscana.it">alvarojuan.abella@arpat.toscana.it</a>
Andersen, Jesper Levring (vice-chair)	Department of Food and Resource Economics (IFRO) Section for Environment and Natural Resources University of Copenhagen Rolighedsvej 25 1958 Frederiksberg Denmark	Tel.dir.: +45 35 28 68 92	<a href="mailto:jla@ifro.ku.dk">jla@ifro.ku.dk</a>
Bailey, Nicholas	Fisheries Research Services Marine Laboratory, P.O. Box 101 375 Victoria Road, Torry Aberdeen AB11 9DB UK	Tel: +44 (0)1224 876544 Direct: +44 (0)1224 295398 Fax: +44 (0)1224 295511	<a href="mailto:baileyn@marlab.ac.uk">baileyn@marlab.ac.uk</a> <a href="mailto:n.bailey@marlab.ac.uk">n.bailey@marlab.ac.uk</a>

Name	Address <sup>1</sup>	Tel.	Email
<b>STECF members</b>			
Bertignac, Michel	Laboratoire de Biologie Halieutique IFREMER Centre de Brest BP 70 - 29280 Plouzane, France	tel : +33 (0)2 98 22 45 25 - fax : +33 (0)2 98 22 46 53	<a href="mailto:michel.bertignac@ifremer.fr">michel.bertignac@ifremer.fr</a>
Cardinale, Massimiliano	Föreningsgatan 45, 330 Lysekil, Sweden	Tel: +46 523 18750	massimiliano.cardinale@slu.se
Curtis, Hazel	Sea Fish Industry Authority 18 Logie Mill Logie Green Road Edinburgh EH7 4HS	Tel: +44 (0)131 558 3331 Fax: +44 (0)131 558 1442	<a href="mailto:H.Curtis@seafish.co.uk">H.Curtis@seafish.co.uk</a>
Delaney, Alyne	Innovative Fisheries Management, -an Aalborg University Research Centre, Postboks 104, 9850 Hirtshals, Denmark	Tel.: +45 9940 3694	<a href="mailto:ad@ifm.aau.dk">ad@ifm.aau.dk</a>
Daskalov, Georgi	Laboratory of Marine Ecology, Institute of Biodiversity and Ecosystem Research, Bulgarian Academy of Sciences	Tel.: +359 52 646892	<a href="mailto:gmdaskalov@yahoo.co.uk">gmdaskalov@yahoo.co.uk</a>
Döring, Ralf	Thünen Bundesforschungsinstitut, für Ländliche Räume, Wald und Fischerei, Institut für Seefischerei - AG Fischereiökonomie, Palmaille 9, D-22767 Hamburg, Germany	Tel.: 040 38905-185 Fax.: 040 38905-263	<a href="mailto:ralf.doering@ti.bund.de">ralf.doering@ti.bund.de</a>
Gascuel, Didier	AGROCAMPUS OUEST 65 Route de Saint Briec, bat.4 CS 84215, F-35042 RENNES Cedex France	Tel:+33(0)2.23.48.55.34 Fax: +33(0)2.23.48.55.35	<a href="mailto:Didier.Gascuel@agrocampus-ouest.fr">Didier.Gascuel@agrocampus-ouest.fr</a>
Graham, Norman (chair)	Marine Institute, Fisheries Science Services (FSS), Rinville, Oranmore, Co. Galway, Ireland	Tel: + 353(0) 91 87200	<a href="mailto:norman.graham@marine.ie">norman.graham@marine.ie</a>
Garcia Rodriguez, Mariano	Instituto Español de Oceanografía, Servicios Centrales, Corazón de María 8, 28002, Madrid, Spain		<a href="mailto:Mariano.Garcia@md.ieo.es">Mariano.Garcia@md.ieo.es</a>

Name	Address <sup>1</sup>	Tel.	Email
<b>STECF members</b>			
Gustavsson, Tore Karl-Erik	Independent Consultant, Göteborg, Sweden		<a href="mailto:tore.gustavsson@hotmail.com">tore.gustavsson@hotmail.com</a>
Jennings, Simon	CEFAS Lowestoft Laboratory, Pakefield Road, Lowestoft Suffolk, UK NR33 0HT	Tel.: +44 1502562244 Fax: +44 1502513865	<a href="mailto:simon.jennings@cefasc.co.uk">simon.jennings@cefasc.co.uk</a>
Kenny, Andrew	CEFAS Lowestoft Laboratory, Pakefield Road, Lowestoft Suffolk, UK NR33 0HT	Tel.: +44 1502562244 Fax: +44 1502513865	<a href="mailto:andrew.kenny@cefasc.co.uk">andrew.kenny@cefasc.co.uk</a>
Kraak, Sarah	Thünen-Institut für Ostseefischerei, Alter Hafen Süd 2, 18069 Rostock Germany	Tel. +49 3818116113	<a href="mailto:sarah.kraak@ti.bund.de">sarah.kraak@ti.bund.de</a>
Kuikka, Sakari	University of Helsinki, Department of Environmental Sciences, P.O. Box 65 (Viikinkaari 1), FI-00014 University of Helsinki, FINLAND	Tel.: +358 50 3309233 Fax. +358-9-191 58754	<a href="mailto:skuikka@mappi.helsinki.fi">skuikka@mappi.helsinki.fi</a>
Martin, Paloma	CSIC Instituto de Ciencias del Mar Passeig Marítim, 37-49 08003 Barcelona Spain	Tel: 34.93.2309500 direct line : 34.93.2309552 Fax: 34.93.2309555	<a href="mailto:paloma@icm.csic.es">paloma@icm.csic.es</a>
Malvarosa, Loretta	NISEA S.c.a.r.l.		<a href="mailto:malvarosa@nisea.eu">malvarosa@nisea.eu</a>
Murua, Hilario	AZTI - Tecnalia / Unidad de Investigación Marina, Herrera kaia portualdea z/g 20110 Pasaia (Gipuzkoa), Spain	Tel: 0034 667174433 Fax: 94 6572555	<a href="mailto:hmurua@azti.es">hmurua@azti.es</a>
Nord, Jenny	The Swedish Agency of Marine and Water Management (SwAM)	Tel. 0046 76 140 140 3	<a href="mailto:Jenny.nord@havochvatten.se">Jenny.nord@havochvatten.se</a>
Nowakowski, Piotr	Maritime University of Szczecin. – Faculty of Food Science and Fisheries, Department of Fishing Technique, Szczecin		<a href="mailto:npfgd@poczta.onet.pl">npfgd@poczta.onet.pl</a>
Prelezzo, Raul	AZTI - Tecnalia / Unidad de Investigación Marina Txatxarramendi Ugarte z/g 48395 Sukarrieta (Bizkaia), Spain	Tel: 94 6029400 Ext: 406- Fax: 94 6870006	<a href="mailto:rprelezzo@suk.azti.es">rprelezzo@suk.azti.es</a>

Name	Address <sup>1</sup>	Tel.	Email
<b>STECF members</b>			
Sala, Antonello	Fishing Technology Unit National Research Council (CNR) Institute of Marine Sciences (ISMAR) - Fisheries Section Largo Fiera della Pesca, 1 60125 Ancona - Italy	Tel: +39 071 2078841 Fax: +39 071 55313	<a href="mailto:a.sala@ismar.cnr.it">a.sala@ismar.cnr.it</a>
Scarcella, Giuseppe	Environmental Management Unit National Research Council (CNR) Institute of Marine Sciences (ISMAR) - Fisheries Section Largo Fiera della Pesca, 1 60125 Ancona - Italy	Tel: +39 071 2078846 Fax: +39 071 55313	<a href="mailto:g.scarcella@ismar.cnr.it">g.scarcella@ismar.cnr.it</a>
Somarakis, Stylianos	Department of Biology University of Crete VassilikaVouton P.O. Box 2208 71409 Heraklion Crete Greece	Tel.: +30 2610 394065, +30 6936566764	<a href="mailto:somarak@biology.uoc.gr">somarak@biology.uoc.gr</a>
Stransky, Christoph	Thünen Institute [TI-SF] Federal Research Institute for Rural Areas, Forestry and Fisheries, Institute of Sea Fisheries, Palmaille 9, D-22767 Hamburg, Germany	Tel. +49 40 38905-228 Fax: +49 40 38905-263	<a href="mailto:christoph.stransky@ti.bund.de">christoph.stransky@ti.bund.de</a>
Theret, Francois	Scapêche 17 Bd Abbé Le Cam 56100 Lorient France		<a href="mailto:ftheret@comata.com">ftheret@comata.com</a>
Ulrich, Clara	DTU Aqua, National Institute of Aquatic Resources, Technical University of Denmark, Charlottenlund Slot, JægersborgAllé 1, 2920 Charlottenlund, Denmark		<a href="mailto:cu@aqua.dtu.dk">cu@aqua.dtu.dk</a>
Vanhee, Willy	Independent expert		
van Oostenbrugge, Hans	LandbouwEconomisch Institu ut- LEI, Fisheries Section, Burg. Patijnlaan 19 P.O.Box 29703 2502 LS The Hague The Netherlands	Tel:+31 (0)70 3358239 Fax: +31 (0)70 3615624	<a href="mailto:Hans.vanOostenbrugge@wur.nl">Hans.vanOostenbrugge@wur.nl</a>

**Adhoc Expert Group participants:**

<b>JRC experts</b>			
Casey, John	European Commission, Joint Research Centre (IPSC), Maritime Affairs Unit Via E. Fermi, 2749 21027 Ispra (VA), Italy	(39) 0332 783936	<a href="mailto:john.casey@jrc.ec.europa.eu">john.casey@jrc.ec.europa.eu</a>
Jardim, Ernesto	European Commission, Joint Research Centre (IPSC), Maritime Affairs Unit Via E. Fermi, 2749 21027 Ispra (VA), Italy	(39) 0332 785311	<a href="mailto:ernesto.jardim@jrc.ec.europa.eu">ernesto.jardim@jrc.ec.europa.eu</a>
Mosqueira, Iago	European Commission, Joint Research Centre (IPSC), Maritime Affairs Unit Via E. Fermi, 2749 21027 Ispra (VA), Italy	(39) 0332 785413	<a href="mailto:iago.mosqueira-sanchez@jrc.ec.europa.eu">iago.mosqueira-sanchez@jrc.ec.europa.eu</a>
Osio, Giacomo Chato	European Commission, Joint Research Centre (IPSC), Maritime Affairs Unit Via E. Fermi, 2749 21027 Ispra (VA), Italy	(39) 0332 785948	<a href="mailto:giacomo-chato.osio@jrc.ec.europa.eu">giacomo-chato.osio@jrc.ec.europa.eu</a>
Scott, Finlay	European Commission, Joint Research Centre (IPSC), Maritime Affairs Unit Via E. Fermi, 2749 21027 Ispra (VA), Italy	(39) 0332 789610	<a href="mailto:finlay.scott@jrc.ec.europa.eu">finlay.scott@jrc.ec.europa.eu</a>

**ANNEX I - REPORT TO THE STECF**

**AD HOC EXPERT GROUP on  
Monitoring the Performance of the Common Fisheries  
Policy**

**Ispra, Italy, 1-5 February 2016**

This report does not necessarily reflect the view of the STECF and the European Commission and in no way anticipates the Commission's future policy in this area

# Report of the ad hoc Expert Group on monitoring the performance of the Common Fisheries Policy

Ernesto Jardim, Iago Mosqueira, Finlay Scott, Chato Osio, John Casey

JRC Ispra (IT), 18 March, 2016

## Abstract

Indicators to monitor the implementation of the Common Fisheries Policy (CFP) were computed by an ad-hoc working group. These information formed the basis of STECF's advice to the European Commission about progress of the CFP in the Northeast Atlantic and Mediterranean European coastal waters. The indicators were computed following the adopted protocol. Calculations were carried out using publicly available datasets of stock assessment results, from ICES and STECF's expert working groups dealing with stock assessment in the Mediterranean region. The indicators computed for the Northeast Atlantic European coastal waters were: 'Number of stocks where fishing mortality exceeds  $F_{MSY}$ ', 'Number of stocks where fishing mortality is equal to or less than  $F_{MSY}$ ', 'Number of stocks outside safe biological limits', 'Number of stocks inside safe biological limits', 'Annual mean value of  $F/F_{MSY}$ ' and 'advice coverage'. For the Mediterranean the indicator 'Annual mean value of  $F/F_{MSY}$ ' was computed for the first time. A number of inconsistencies in the protocol were identified by the adhoc working group, which require attention from the STECF plenary.

## Contents

<b>1</b>	<b>Introduction</b>	<b>2</b>
<b>2</b>	<b>Data &amp; Methods</b>	<b>4</b>
<b>3</b>	<b>Northeast Atlantic (FAO 27)</b>	<b>5</b>
<b>4</b>	<b>Mediterranean (FAO 37)</b>	<b>14</b>
<b>5</b>	<b>Status across all stocks in 2015</b>	<b>16</b>
	<b>Appendix A: Source code</b>	<b>20</b>
	<b>Appendix B: Common Fisheries Policy Monitoring - Protocol for computing indicators</b>	<b>35</b>
	<b>References</b>	<b>47</b>

# 1 Introduction

The monitoring of the Common Fisheries Policy (European Parliament and Council of the European Union 2002a) implementation is of utmost importance for the European Union (EU).

The European Commission Scientific, Technical and Economic Committee for Fisheries (STECF), as the major scientific advisory body on fisheries policy to the European Commission (EC), has received the task of reporting on the CFP implementation through the publication of a series of indicators.

To make the process consistent and transparent STECF (STECF 2015a) approved a protocol for computing the required indicators (Annex B, (Jardim et al. 2015)), which was used to produce the indicators shown below.

## 1.1 Protocol inconsistencies

During the process of producing this report a number of inconsistencies were found, which are listed here for a future revision of the protocol.

- **Biological reference points** The protocol refers to  $B_{MSY}$  to compute Safe Biological Limits (SBL), but due to the limited number of estimates of  $B_{MSY}$  the Ad hoc group used  $B_{pa}$ , or proxies, to compute this indicator, in agreement with what was done last year. A mix of data was thus used to build this indicator:  $B_{pa}$  was used if available, followed by  $B_{trigger}$ , and if neither were available  $B_{lim}$  was used.
- **Mediterranean sampling frame** In the Mediterranean there are no TACs. Instead, the Mediterranean sampling frame is based on the stocks with minimum landing size as set in the Mediterranean Regulation (EC 1967/2006). However, this list of species includes species which are not managed to achieve MSY and leaves out important stocks, like shrimps, anglerfish, etc, which are regularly assessed. The full list of species included in the sampling frame are presented in Table 1, as well as the list of species identified by STECF EWG 14-23 (STECF 2014).
- **Proportion of stocks covered by assessments** This indicator is not described in the protocol although it's required, to evaluate the coverage of the sampling frame (TACs) by scientific advice. See the Methods section for details.

## 1.2 Terms of reference

1. STECF is requested to report on progress in achieving MSY objectives in line with CFP

## 1.3 Participants

- **J. Casey**, European Commission, Joint Research Center, IPSC/Maritime Affairs Unit G03, Via E. Fermi 2749, 21027 Ispra VA, Italy
- **E. Jardim**, European Commission, Joint Research Center, IPSC/Maritime Affairs Unit G03, Via E. Fermi 2749, 21027 Ispra VA, Italy
- **I. Mosqueira**, European Commission, Joint Research Center, IPSC/Maritime Affairs Unit G03, Via E. Fermi 2749, 21027 Ispra VA, Italy
- **C. Osio**, European Commission, Joint Research Center, IPSC/Maritime Affairs Unit G03, Via E. Fermi 2749, 21027 Ispra VA, Italy
- **F. Scott**, European Commission, Joint Research Center, IPSC/Maritime Affairs Unit G03, Via E. Fermi 2749, 21027 Ispra VA, Italy



Table 1: Comparison of Species in the currently implemented sampling frame, based on Annex III of the EC 1967-2006, with the list of species proposed in EWG 14-23. The species assessed by STECF EWG MED are marked (\*)

Sampling Frame based on EC 1967-2006	Species listed by EWG 14-23
Dicentrarchus labrax	Aristaeomorpha foliacea*
Diplodus annularis	Aristeus antennatus*
Diplodus puntazzo	Boops boops
Diplodus sargus	Chamelea gallina
Diplodus vulgaris	Coryphaena hippurus
Engraulis encrasicolus*	Eledone cirrosa
Epinephelus spp	Eledone moschata
Homarus gammarus	Engraulis encrasicolus*
Lithognathus mormyrus	Lepidopus caudatus
Merluccius merluccius*	Loligo vulgaris
Mullus spp*	Lophius budegassa*
Nephrops norvegicus*	Lophius piscatorius
Pagellus acarne	Merlangius merlangus
Pagellus bogaraveo	Merluccius merluccius*
Pagellus erythrinus*	Micromesistius poutassou*
Pagrus pagrus	Mullus barbatus*
Palinuridae	Mullus surmuletus*
Parapenaeus longirostris*	Nephrops norvegicus*
Pecten jacobaeus	Octopus vulgaris
Polyprion americanus	Pagellus erythrinus*
Sardina pilchardus*	Palinurus elephas
Scomber spp	Parapenaeus longirostris*
Solea vulgaris*	Penaeus kerathurus
Sparus aurata	Phycis blennoides
Trachurus spp	Raja clavata
Venerupis spp	Sardina pilchardus*
Venus spp	Sardinella aurita
	Scomber scombrus
	Scomber japonicus
	Sepia officinalis
	Solea vulgaris*
	Sparus aurata
	Spicara smaris*
	Squilla mantis*
	Trachurus mediterraneus
	Trachurus trachurus

## 2 Data & Methods

The methods applied and the definition of the sampling frames followed the protocol (Jardim et al. 2015) agreed by (STECF 2015a).

### 2.1 Data sources

The data sources used referred to the coastal waters of the EU in FAO areas 27 (Northeast Atlantic) and 37 (Mediterranean). The Mediterranean included GSAs 1,5,6,7,8,9,10,11, 15,16, 17,18,19, 20, 22, 23 and 25. The NE Atlantic included the ICES subareas “III”, “IV”, “VI” (excluding Norwegian waters of division IVa), “VII”, “VIII” and “IX”.

#### 2.1.1 Stock assessment information

For the Mediterranean region the information were extracted from STECF Mediterranean Expert Working Group repositories (<https://stecf.jrc.ec.europa.eu/reports/medbs>). This was done through a manual process since the information is not available online in a database or a suitable form for scraping.

For the NE Atlantic the information was downloaded from the ICES website, using the available webservices (<http://standardgraphs.ices.dk>).

The most recent published assessments for each stock were used.

#### 2.1.2 Management units information

For the Mediterranean area, the management units were defined by combining the species that have a minimum landing size (MLS) with the GSAs. Note that using the list of stocks with MLS leaves out important species which are of commercial interest.

For the NE Atlantic, management units are defined by TACs (fishing opportunities for a species or group of species in a specific area). The information regarding TACs in 2014 was downloaded from FIDES (<http://fides3.fish.cec.eu.int/>) reporting system. Note that to compute the indicators shown below the TAC definitions are needed, not the TAC value.

## 2.2 Differences from previous report

- **Computation of SBL** In the previous report (STECF 2015b), if one of the indicators ( $F/F_{MSY}$  or  $B/B_{ref}$ ) was missing SBL was computed based on the one indicator available. Such approach was changed to avoid computing SBL for stocks which don't have the complete set of information needed. In this report if one of the indicators is missing SBL is not computed.
- **Proportion of stocks covered by assessments** Advice coverage was estimated as the fraction of the TACs that have matching information from stock assessments. The biological area that defines the spatial distribution of a stock does not necessarily match the TAC area. The area covered by a TAC can span more than one biological stock and a single biological stock can cover more than one TAC. To link the two sets of information the two definitions were mapped at the level of the ICES divisions. A TAC was considered to be covered by stock assessment when at least one of its divisions was within the biological stock area and the stock had biological reference points. This indicator is not described in the protocol and is experimental.

### 3 Northeast Atlantic (FAO 27)

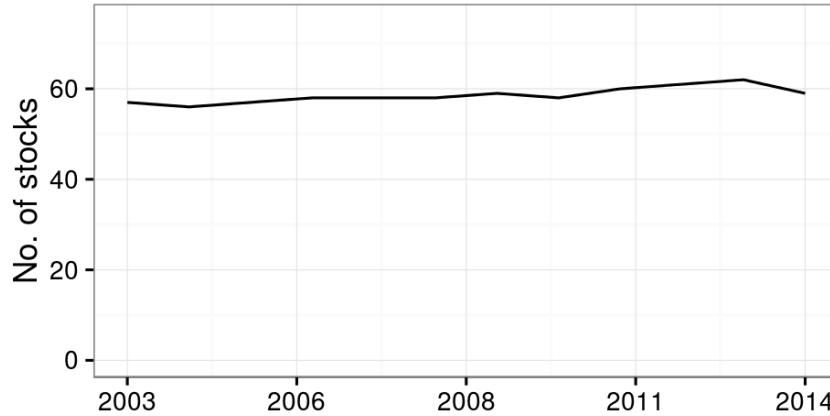


Figure 1: Number of stocks in the ICES area for which estimates of  $F/F_{MSY}$  are available by year.

Table 2: Number of stocks in the ICES area for which estimates of  $F/F_{MSY}$  are available by ecoregion and year.

Region	2003	2004	2005	2006	2007	2008	2009	2010	2011	2012	2013	2014
ALL	57	56	57	58	58	58	59	58	60	61	62	59
Baltic Sea	7	7	7	7	7	7	7	7	7	7	7	7
Greater North Sea	20	20	20	20	20	20	20	20	21	21	21	21
Western European	25	24	25	26	26	26	27	26	27	28	29	27
Widely distributed	5	5	5	5	5	5	5	5	5	5	5	4

#### 3.1 Indicators of management performance

Estimates of relative stock status were only considered for the 2003 - 2014 period, as the first date marks the start of the previous CFP (European Parliament and Council of the European Union 2002b) and the second is the last year for which abundance and fishing mortality estimates are available from the 2015 stock assessment dataset.

### 3.1.1 Number of stocks where fishing mortality exceeds $F_{MSY}$

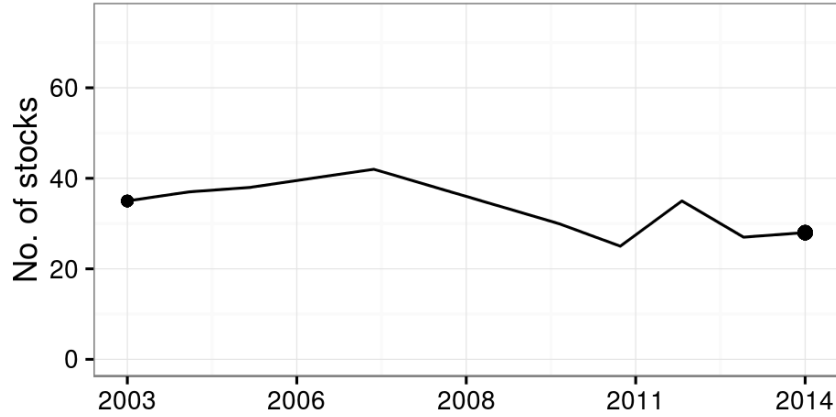


Figure 2: Number of stocks where fishing mortality ( $F$ ) exceeds fishing mortality at MSY ( $F_{MSY}$ ) by year.

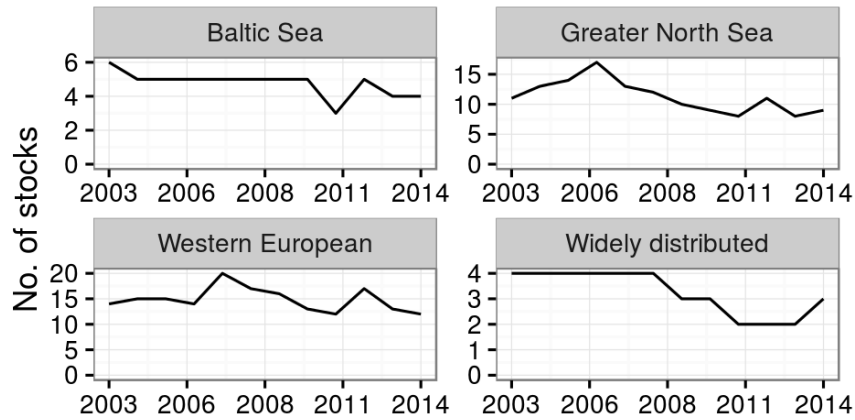


Figure 3: Number of stocks where fishing mortality ( $F$ ) exceeds fishing mortality at MSY ( $F_{MSY}$ ) by ecoregion and year.

Table 3: Number of stocks where fishing mortality ( $F$ ) exceeds fishing mortality at MSY ( $F_{MSY}$ ) by ecoregion and year.

Region	2003	2004	2005	2006	2007	2008	2009	2010	2011	2012	2013	2014
ALL	35	37	38	40	42	38	34	30	25	35	27	28
Baltic Sea	6	5	5	5	5	5	5	5	3	5	4	4
Greater North Sea	11	13	14	17	13	12	10	9	8	11	8	9
Western European	14	15	15	14	20	17	16	13	12	17	13	12
Widely distributed	4	4	4	4	4	4	3	3	2	2	2	3

### 3.1.2 Number of stocks where fishing mortality is equal to or less than $F_{MSY}$

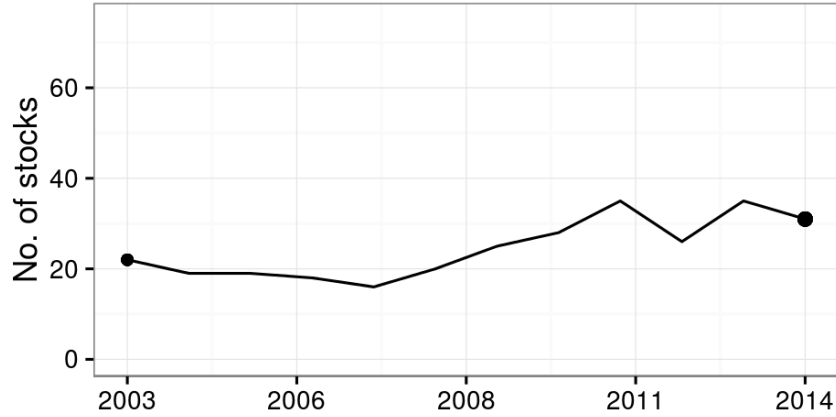


Figure 4: Number of stocks where fishing mortality ( $F$ ) does not exceed fishing mortality at MSY ( $F_{MSY}$ ) by year.

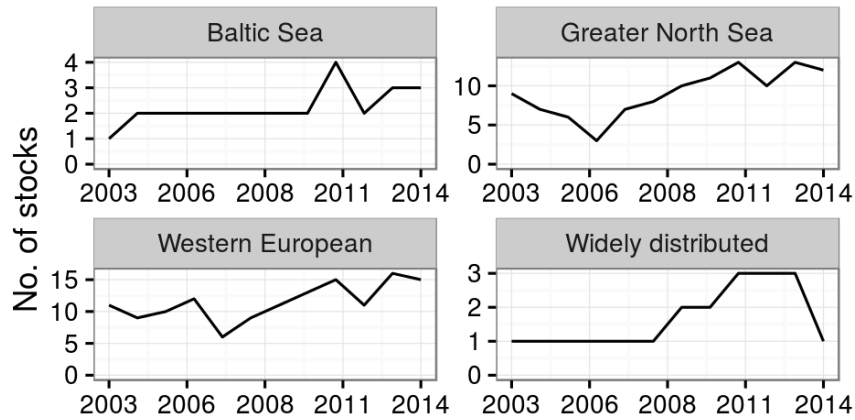


Figure 5: Number of stocks where fishing mortality ( $F$ ) does not exceed fishing mortality at MSY ( $F_{MSY}$ ) by ecoregion and year.

Table 4: Number of stocks where fishing mortality ( $F$ ) does not exceed fishing mortality at MSY ( $F_{MSY}$ ) by ecoregion and year.

Region	2003	2004	2005	2006	2007	2008	2009	2010	2011	2012	2013	2014
ALL	22	19	19	18	16	20	25	28	35	26	35	31
Baltic Sea	1	2	2	2	2	2	2	2	4	2	3	3
Greater North Sea	9	7	6	3	7	8	10	11	13	10	13	12
Western European	11	9	10	12	6	9	11	13	15	11	16	15
Widely distributed	1	1	1	1	1	1	2	2	3	3	3	1

### 3.1.3 Number of stocks outside safe biological limits

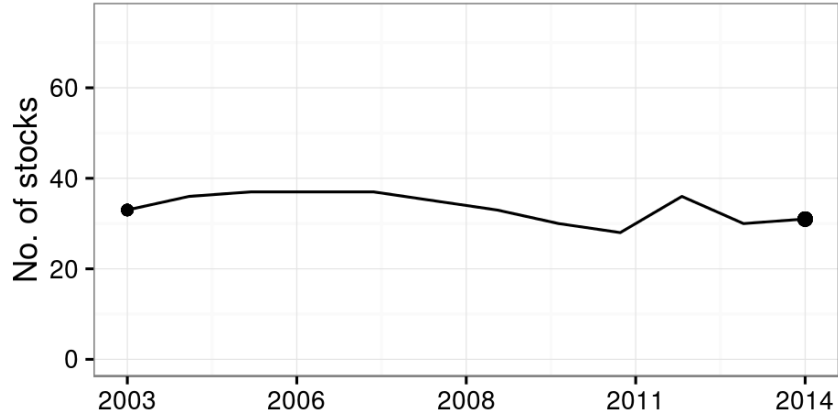


Figure 6: Number of stocks outside safe biological limits by year.

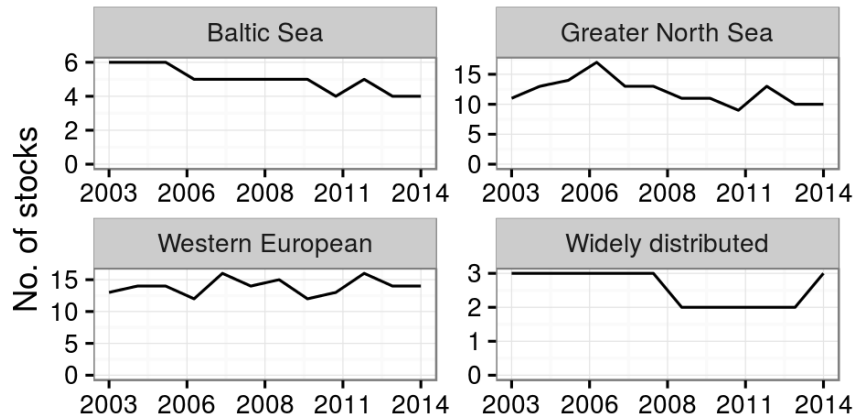


Figure 7: Number of stocks outside safe biological limits by ecoregion and year.

Table 5: Number of stocks outside safe biological limits by ecoregion and year.

Region	2003	2004	2005	2006	2007	2008	2009	2010	2011	2012	2013	2014
ALL	33	36	37	37	37	35	33	30	28	36	30	31
Baltic Sea	6	6	6	5	5	5	5	5	4	5	4	4
Greater North Sea	11	13	14	17	13	13	11	11	9	13	10	10
Western European	13	14	14	12	16	14	15	12	13	16	14	14
Widely distributed	3	3	3	3	3	3	2	2	2	2	2	3

### 3.1.4 Number of stocks inside safe biological limits

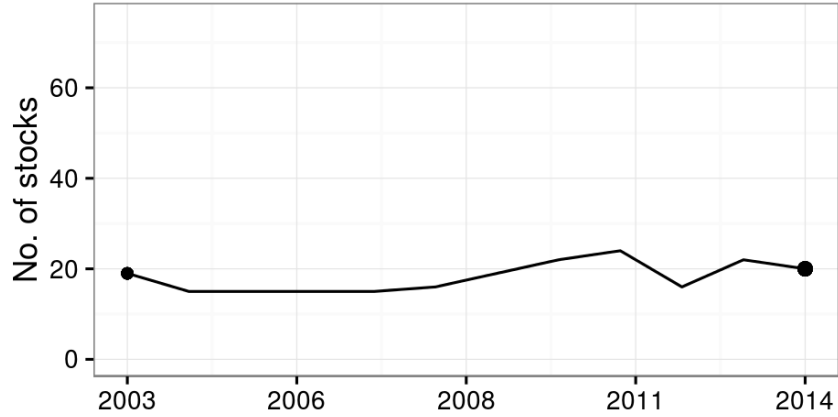


Figure 8: Number of stocks inside safe biological limits by year.

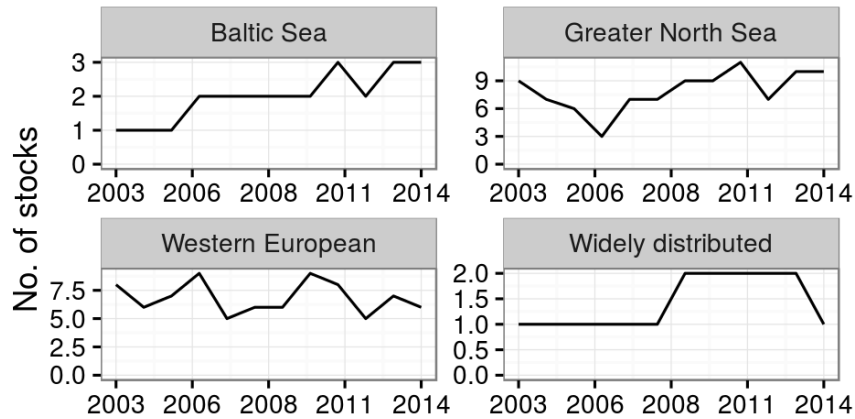


Figure 9: Number of stocks inside safe biological limits by ecoregion and year.

Table 6: Number of stocks inside safe biological limits by ecoregion and year.

Region	2003	2004	2005	2006	2007	2008	2009	2010	2011	2012	2013	2014
ALL	19	15	15	15	15	16	19	22	24	16	22	20
Baltic Sea	1	1	1	2	2	2	2	2	3	2	3	3
Greater North Sea	9	7	6	3	7	7	9	9	11	7	10	10
Western European	8	6	7	9	5	6	6	9	8	5	7	6
Widely distributed	1	1	1	1	1	1	2	2	2	2	2	1

### **3.1.5 Annual mean value of $F/F_{MSY}$**

For this indicator, stocks for which fishing mortality was reported as an harvest rate, or managed under escapement strategies, were excluded.



*Design based indicator*

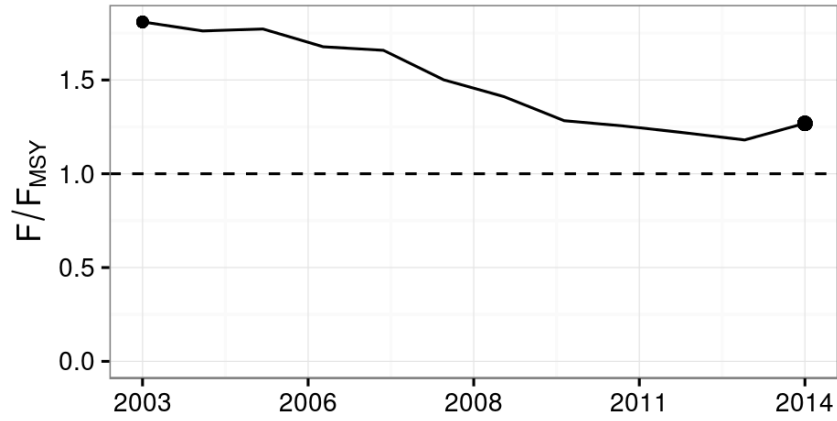


Figure 10: Arithmetic mean value of the  $F/F_{MSY}$  ratio by year.

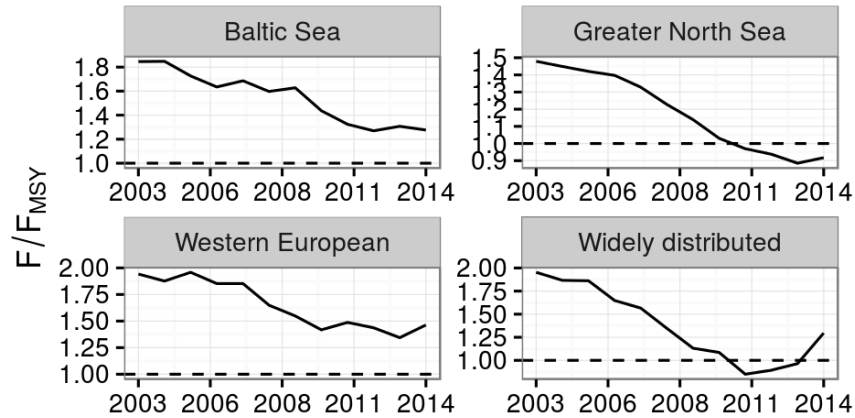


Figure 11: Arithmetic mean value of the  $F/F_{MSY}$  ratio by ecoregion and year.

Table 7: Arithmetic mean value of the  $F/F_{MSY}$  ratio by ecoregion and year.

Region	2003	2004	2005	2006	2007	2008	2009	2010	2011	2012	2013	2014
ALL	1.81	1.76	1.77	1.68	1.66	1.50	1.41	1.28	1.25	1.22	1.18	1.27
Baltic Sea	1.85	1.85	1.73	1.63	1.69	1.60	1.63	1.44	1.32	1.27	1.31	1.28
Greater North Sea	1.48	1.45	1.42	1.40	1.33	1.23	1.14	1.03	0.97	0.94	0.89	0.92
Western European	1.94	1.88	1.96	1.85	1.85	1.65	1.55	1.42	1.49	1.44	1.34	1.46
Widely distributed	1.95	1.87	1.86	1.65	1.57	1.35	1.13	1.09	0.85	0.89	0.96	1.30

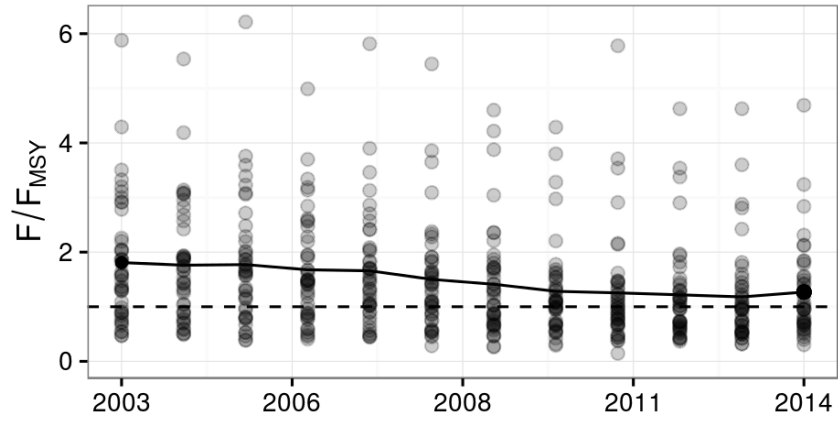


Figure 12: Scatterplot of  $F/F_{MSY}$  values and arithmetic mean by year.

*Model based indicator*

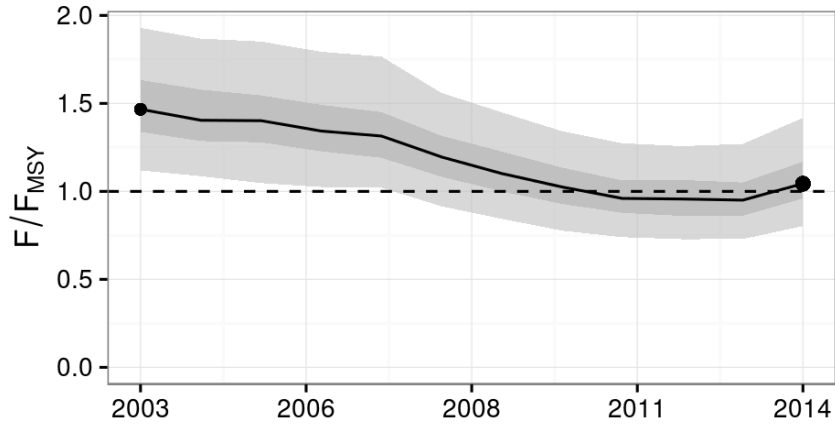


Figure 13: Modelled value of the  $F/F_{MSY}$  ratio by year.

Table 8: Quantiles of the  $F/F_{MSY}$  ratio by year.

	2003	2004	2005	2006	2007	2008	2009	2010	2011	2012	2013	2014
2.5%	1.12	1.09	1.05	1.03	1.02	0.91	0.84	0.78	0.74	0.73	0.73	0.80
25%	1.34	1.29	1.28	1.23	1.19	1.08	1.00	0.93	0.88	0.86	0.86	0.96
50%	1.47	1.40	1.40	1.34	1.31	1.20	1.10	1.03	0.96	0.96	0.95	1.04
75%	1.63	1.58	1.55	1.49	1.45	1.32	1.23	1.13	1.06	1.06	1.05	1.17
97.5%	1.93	1.87	1.85	1.79	1.77	1.56	1.45	1.34	1.27	1.26	1.27	1.42

### 3.2 Indicators of advice coverage

This indicator is experimental and was not yet discussed by STECF.

Table 9: Number of stocks with  $F/F_{MSY}$  or  $B/B_{ref}$ , number of TAC units and proportion of TAC units which are covered by stock assessments.

	No	No TACs	Fraction of TACs with assessments
Stocks with F/FMSY estimate	59	238	0.58
Stocks with B/Bref estimate	52	238	0.51

## 4 Mediterranean (FAO 37)

The number of stocks assessed in the Mediterranean is not stable as not all stocks are assessed regularly and in some years the assessments had a particular focus on some species groups. During the study period the number of assessments in each year ranges from 9 to 18 stocks.

This situation renders the interpretation of the deterministic indicators misleading. With such differences in the number of stocks assessed each year, the trends in the indicators are confounded with the number of stocks available for their computation. As such, only the model based  $F/F_{MSY}$  indicator is shown, since it was purposely designed to cope with such problem.

It should be key in mind though, that a large number of stocks were not included in the analysis, due to:

- the application of the minimum landing size to define the sampling frame, which left out important stocks and their assessments;
- the gap between the last assessment EWG of 2015 and the next STECF Plenary (spring 2016), where the assessments have to be approved, which leaves out about half of the stocks assessed in 2015.

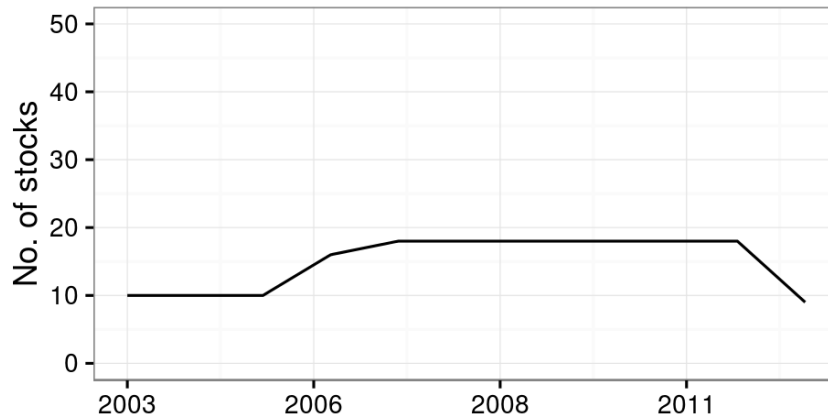


Figure 14: Number of stocks in the Mediterranean area for which estimates of  $F/F_{MSY}$  are available by year, and which have minimum landing size. These refers only to stocks in the European coastal waters (GSAs 1, 5, 6, 7, 8, 9, 10, 11, 15, 16, 17, 18, 19, 20, 22, 23 and 25)

### 4.1 Indicators of management performance

#### 4.1.1 Annual value of $F/F_{MSY}$ - Model based indicator

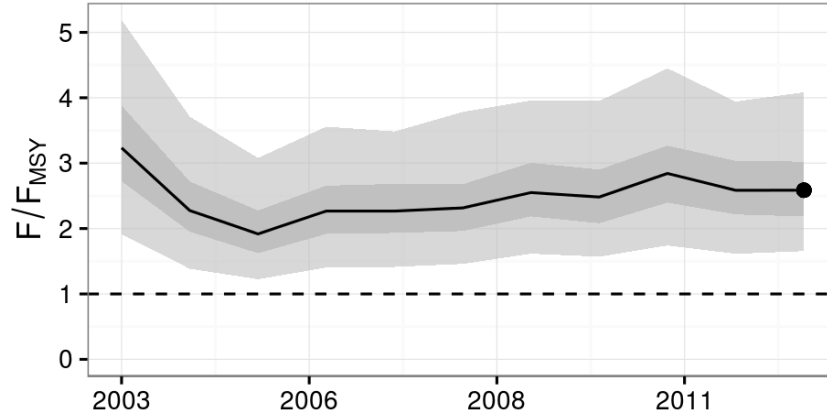


Figure 15: Modelled value of the  $F/F_{MSY}$  ratio by year.

Table 10: Quantiles of the  $F/F_{MSY}$  ratio by year.

	2003	2004	2005	2006	2007	2008	2009	2010	2011	2012	2013
2.5%	1.914	1.385	1.226	1.404	1.414	1.460	1.616	1.570	1.742	1.614	1.656
25%	2.725	1.952	1.623	1.918	1.934	1.963	2.186	2.083	2.397	2.217	2.185
50%	3.233	2.275	1.918	2.268	2.267	2.315	2.550	2.482	2.843	2.585	2.586
75%	3.879	2.719	2.276	2.655	2.683	2.678	3.006	2.901	3.267	3.035	3.023
97.5%	5.190	3.710	3.079	3.558	3.485	3.784	3.958	3.951	4.450	3.942	4.084

## **5 Status across all stocks in 2015**

The list of stocks below includes stocks assessed between 2013 and 2015.

Region	Stock	Description	F ind	F status	SBL
Baltic Sea	cod-2224	Cod ( <i>Gadus morhua</i> ) in Subdivisions 22-24 (Western Baltic Sea)	3.24		
	her-3a22	Herring in Division IIIa and Subdivisions 22 - 24 (Western Baltic spring spawners)	0.82	●	●
	her-riga	Herring in Subdivision 28.1 (Gulf of Riga)	1.07		
	her-30	Herring in Subdivision 30 (Bothnian Sea)	1.03		
	her-2532-gor	Herring in Subdivisions 25 - 29 (excluding Gulf of Riga) and 32	0.72	●	●
	ple-2123	Plaice in Subdivisions 21, 22, and 23 (Kattegat, Belts, and Sound)	0.50	●	●
	spr-2232	Sprat in Subdivisions 22 - 32 (Baltic Sea)	1.57		
	cod-347d	Cod ( <i>Gadus morhua</i> ) in Subarea IV and Divisions VIIId and IIIa West (North Sea, Eastern Engl [...])	1.19		
	had-346a	Haddock in Subarea IV and Divisions IIIa West and VIa (North Sea, Skagerrak and West of Sc [...])	0.65	●	●
	her-47d3	Herring in Subarea IV and Divisions IIIa and VIIId (North Sea autumn spawners)	0.75	●	●
	nep-3-4	Nephrops in Division IIIa (Skagerak Kattegat, FU 3,4)	0.38	●	●
	nep-7	Nephrops in Division IVa (Fladen Ground, FU 7)	0.47	●	●
	nep-9	Nephrops in Division IVa (Moray Firth, FU 9)	1.25		
	nep-6	Nephrops in Division IV'b (Farn Deep, FU 6)	1.60		
	nep-8	Nephrops in Division IV'b (Firth of Forth, FU 8)	1.79		
	pan-sknd	Northern shrimp ( <i>Pandalus borealis</i> ) in Divisions IIIa West and IVa East (Skagerrak and Nor [...])	0.54	●	●
	nop-34-oct	Norway Pout in Subarea IV (North Sea) and IIIa (Skagerrak - Kattegat) - Autumn assessment	*		
ple-eche	Plaice in Division VIIId (Eastern Channel)	0.45	●	●	
ple-nsea	Plaice Subarea IV (North Sea)	0.95	●	●	
sai-3a46	Saithe in Subarea IV (North Sea) Division IIIa West (Skagerrak) and Subarea VI (West of Sc [...])	0.96	●	●	
san-ns3	Sandeel in the Central Eastern North Sea (SA 3)	*			
san-ns1	Sandeel in the Dogger Bank area (SA 1)	*			
san-ns2	Sandeel in the South Eastern North Sea (SA 2)	*			
sol-kask	Sole in Division IIIa and Subdivisions 22-24 (Skagerrak, Kattegat, and the Belts)	0.79	●	●	
sol-eche	Sole in Division VIIId (Eastern Channel)	1.83			
sol-echw	Sole in Division VIIe (Western Channel)	0.70	●	●	
sol-nsea	Sole in Subarea IV (North Sea)	1.27			
spr-nsea	Sprat in Subarea IV (North Sea)	*		●	
SOL-17	Common sole in GSA 17	3.00			
DPS-1	Deep-water rose shrimp in GSA 1	1.65			
DPS-10	Deep-water rose shrimp in GSA 10	1.33			
DPS-19	Deep-water rose shrimp in GSA 19	2.39			
DPS-5	Deep-water rose shrimp in GSA 5	1.10			
DPS-6	Deep-water rose shrimp in GSA 6	5.48			
DPS-9	Deep-water rose shrimp in GSA 9	0.97	●	●	
ANE-17-18	European anchovy in GSA 17, 18	2.09			
Mediterranean					

Continued on next page

Region	Stock	Description	F ind	F status	SBL
	HKE-01-05-06-07	European hake in GSA 01, 05, 06, 07	3.62		
	HKE-09-10-11	European hake in GSA 09, 10, 11	4.27		
	HKE-18	European hake in GSA 18	5.76		
	HKE-19	European hake in GSA 19	6.20		
	PIL-17-18	European pilchard(=Sardine) in GSA 17, 18	2.32		
	PIL-6	European pilchard(=Sardine) in GSA 6	1.66		
	NEP-15-16	Norway lobster in GSA 15-16	0.75	•	
	NEP-18	Norway lobster in GSA 18	6.08		
	NEP-5	Norway lobster in GSA 5	1.69		
	NEP-9	Norway lobster in GSA 9	2.03		
Western European	anb-8c9a	Black-bellied anglerfish ( <i>Lophius budegassa</i> ) in Divisions VIIIc and IXa (Cantabrian Sea, A [...])	0.59	•	•
	cod-7e-k	Cod ( <i>Gadus morhua</i> ) in Divisions VIIe-k (Western English Channel and Southern Celtic Seas)	1.79		
	cod-scov	Cod ( <i>Gadus morhua</i> ) in Division VIa (West of Scotland)	4.69		
	cod-iris	Cod ( <i>Gadus morhua</i> ) in Division VIIa (Irish Sea)	2.88		
	mgb-8c9a	Four-spot megrim ( <i>Lepidorhombus boscii</i> ) in Divisions VIIIc and IXa	2.31		
	had-7b-k	Haddock in Divisions VIIIb,c,e-k	1.49		
	had-rock	Haddock in Division VIIb (Rockall)	2.12		
	hke-soth	Hake in Division VIIIc and IXa (Southern stock)	2.84		
	her-67bc	Herring ( <i>Clupea harengus</i> ) in Divisions VIa and VIIIb,c (West of Scotland, West of Ireland)	0.58	•	
	her-vian	Herring in Division VIa (North)	1.07		
	her-nirs	Herring in Division VIIa North of 52° 30' N (Irish Sea)	0.95	•	•
	her-irIs	Herring in Division VIIa South of 52° 30' N and VIIIg,h,i,j,k (Celtic Sea and South of Ireland [...])	0.72	•	•
	hom-soth	Horse mackerel ( <i>Trachurus trachurus</i> ) in Division IXa (Southern stock)	0.40	•	•
	meg-4a6a	Megrim ( <i>Lepidorhombus spp</i> ) in Divisions IVa and VIa	0.30	•	•
	ngw-8c9a	Megrim ( <i>Lepidorhombus whiffiagonis</i> ) in Divisions VIIIc and IXa	2.13		
	nep-11	Nephrops in Division VIa (North Minch, FU 11)	0.88	•	
	nep-12	Nephrops in Division VIa (South Minch, FU 12)	0.47	•	•
	nep-19	Nephrops in Division VIIa,g,j (South East and West of IRL, FU 19)	0.48	•	
	nep-14	Nephrops in Division VIIa (Irish Sea East, FU 14)	0.68	•	
	nep-15	Nephrops in Division VIIa (Irish Sea West, FU 15)	1.02		
	nep-17	Nephrops in Division VIIb (Aran Grounds, FU 17)	0.79	•	
	nep-16	Nephrops in Division VIIIb,c,j,k (Porcupine Bank, FU 16)	0.58	•	
	nep-13	Nephrops in the Firth of Clyde + Sound of Jura (FU 13)	1.38		
	nep-22	Nephrops in the Smalls (FU 22)	0.72	•	
	sol-celt	Sole in Divisions VIII, g (Celtic Sea)	1.41		
	sol-bisc	Sole in Divisions VIIa,b (Bay of Biscay)	1.85		

Continued on next page



Region	Stock	Description	F ind	F status	SBL
	sol-iris	Sole in Division VIIa (Irish Sea)	0.66	•	
	anp-8c9a	White anglerfish ( <i>Lophius piscatorius</i> ) in Divisions VIIIc and IXa (Cantabrian Sea, Atlantic [...])	1.32		
	whg-7e-k	Whiting in Division VIIIe-k	1.00	•	•
Widely distributed	bli-5b67	Blue ling ( <i>Molva dypterygia</i> ) in Subareas VI-VII and Division Vb (Celtic Seas, English Chan [...])	0.59	•	
	whb-comb	Blue whiting in Subareas I-IX, XII and XIV (Combined stock)	1.43		
	hke-nrtn	Hake in Division IIIa, Subareas IV, VI and VII and Divisions VIIIa,b,d (Northern stock)	1.26		
	hom-west	Horse mackerel ( <i>Trachurus trachurus</i> ) in Divisions IIa, IVa, Vb, VIa, VIIa-c, e-k, VIII (We [...])	0.95	•	•
	mac-nea	Mackerel in the Northeast Atlantic (combined Southern, Western and North Sea spawning comp [...])	1.54		

Table 11: Stock status for all stocks in the sampling frame in 2013. Columns refer to stock description, value of the  $F_{2013}/F_{MSY}$  ratio ( $F_{ind}$ ),  $F_{2013}$  lower than  $F_{MSY}$  ( $F_{status}$ ), and whether the stock is inside safe biological limits ( $SBL$ ). Stocks managed under escapement strategies dot not have an estimate of  $F/F_{MSY}$  (★)

## Appendix A: Source code

### 5.1 Init

```
library(xtable)
library(reshape)
library(reshape2)
library(dplyr)
library(tidyr)
library(ggplot2)
library(lme4)
library(knitr)
theme_set(theme_bw())
opts_chunk$set(fig.width = 4.5, fig.height = 2.5, dpi = 210,
  fig.pos = "H", message = FALSE, warning = FALSE, echo = FALSE,
  cache = FALSE, tidy = TRUE, tidy.opts = list(width.cutoff = 60))
options(stringsAsFactors = FALSE, width = 60)
sc <- scale_x_continuous(breaks = seq(2003, 2014, length = 5))
load("data.RData")
# cod-2532 assessment was dropped but still in db
sa <- subset(sa, !(FishStockName %in% c("cod-2532")))
```

### 5.2 Data loading and transformation

```
library(XML)
library(RCurl)
library(reshape)
library(reshape2)
library(dplyr)
library(tidyr)
options(stringsAsFactors=FALSE)

#=====
# Auxiliary functions
#=====

doit <- function(x){
  url <- "StandardGraphsWebServices.asmx/getSummaryTable?key="
  url <- paste0("http://standardgraphs.ices.dk/", url, x$key[1])
  obj <- getURL(url)
  obj <- xmlToList(xmlTreeParse(obj)$doc$children[[1]])
  df0 <- as.data.frame(apply(obj$lines, 1, as.numeric))
  df0 <- cbind(df0, do.call("cbind", obj[names(obj)[!names(obj) == "lines"]]))
  url <- "StandardGraphsWebServices.asmx/getFishStockReferencePoints?key="
  url <- paste0("http://standardgraphs.ices.dk/", url, x$key)
  obj <- getURL(url)
  df0 <- cbind(df0, xmlToDataFrame(obj))
  df0 <- melt(df0, id.vars="Year")
  df0 <- cbind(df0, x)
  return(df0)
}
```

```

doitAreas <- function(x){
  url <- paste("http://vocab.ices.dk/services/pox/GetCodeDetail/ices_stockcode/",
x$key[1], sep="")
  ox0 <- getURL(url)
  ox0 <- xmlTreeParse(ox0)
  ox0 <- xmlToList(ox0$doc$children$GetCodeDetailResponse$children$CodeDetail)
  s0 <- data.frame(t(unlist(ox0[1:5])))
  a0 <- do.call("rbind", lapply(lapply(ox0[7:length(ox0)], "[" , "Code"),
unlist))
  a1 <- do.call("rbind", lapply(lapply(ox0[7:length(ox0)], "[" , "CodeType"),
unlist))
  a0 <- a0[a1[, "CodeType.Key"]=="ICES_Area",]
  p0 <- data.frame(t(unlist(ox0[[6]]$Code)))
  s0 <- data.frame(s0, p0)
  if(is.null(nrow(a0))){
    ox <- data.frame(s0, t(a0))
  } else {
    s0 <- s0[rep(1, nrow(a0)),]
    ox <- cbind(s0, a0)
  }
  ox <- ox[,c("Key", "Description", "Description.1", "Code.Key",
"Code.Description")]
  names(ox) <- c("stock", "stockDescription", "species", "area",
"areaDescription")
  return(ox)
}

```

```

#####
# Mediterranean
#####
#=====
# Mediterranean stock assessment information
#=====
mmu <- read.csv("../data/medManagementUnits.csv")
mmu$manUnit <- paste(mmu$Stock, mmu$Area, sep="_")
mmu <- subset(mmu, !(Meeting %in% c("10-05_SG-MED 10-02", "2011-11_STECF 11-14")))

#=====
# Mediterranean management units (MLS) information
#=====
load("../data/Mediterranean_cfp2015.Rdata")
msa <- cfp2015
msa$stk <- paste(msa$Stock, msa$Area, sep="_")
msa$StockDescription <- paste(msa$Species, "in GSA", gsub("_", " ", msa$Area))

#####
# NE Atlantic
#####
#=====
# ICES stock assessment information
#=====
#-----
# get stocks list

```

```

#-----
url <- "StandardGraphsWebServices.asmx/getListStocks?year=0"
stks <- getURL(paste0("http://standardgraphs.ices.dk/", url))
stks <- xmlToDataFrame(stks)
# Remove unpublished,
stks <- subset(stks, Status!="Not Published")
# "Psetta maxima (historic name) North Sea"
stks <- subset(stks, SpeciesName!="Psetta maxima (historic name)")
# and Molva molva in Iceland
stks <- subset(stks, !(SpeciesName=="Molva molva" &
  EcoRegion=="Iceland and East Greenland"))
# and had-34 and had-scow, which were replaced by had-346a but were left in the db
stks <- subset(stks, !(FishStockName %in% c("had-34", "had-scow")))
# get most recent assessment
stks <- lapply(split(stks, as.character(stks$FishStockName)),
  function(x){
    subset(x, x$AssessmentYear==max(as.numeric(as.character(x$AssessmentYear))))
  })

#-----
# get stock summaries and reference points
#-----
stks <- lapply(stks, function(x) try(doit(x)))
stks <- do.call("rbind", stks[!unlist(lapply(stks, is, "try-error"))])
vars <- c("SSB", "SSB.nil", "landings", "F.nil", "F", "catches.nil", "catches",
  "discards.nil", "discards")
cond <- c("Fage", "FLim", "Fpa", "Bpa", "Blim", "FMSY", "MSYBtrigger", "units",
  "stockSizeDescription", "stockSizeUnits", "fishingPressureDescription",
  "fishingPressureUnits", "MSYBescapement", "Fmanagement", "Bmanagement")

# object
isa <- dcast(subset(stks, variable %in% c(vars, cond)), ... ~variable)
# set empty to NA
isa[isa==""] <- NA

# merge columns with ".nil" into the correct place
isa[is.na(isa$SSB), "SSB"] <- isa[is.na(isa$SSB), "SSB.nil"]
isa[is.na(isa$F), "F"] <- isa[is.na(isa$F), "F.nil"]
isa[is.na(isa$catches), "catches"] <- isa[is.na(isa$catches), "catches.nil"]
isa[is.na(isa$discards), "discards"] <- isa[is.na(isa$discards), "discards.nil"]
isa$SSB.nil <- isa$F.nil <- isa$catches.nil <- isa$discards.nil <- NULL

# fix codes for fishingPressureDescription
isa[!(isa$fishingPressureDescription %in% c("Fishing Pressure: F/FMSY",
  "Fishing Pressure: F", "Fishing pressure: Relative")), "fishingPressureDescription"] <-
  "Fishing Pressure: Harvest rate"

# fix codes for EcoRegion
isa[isa$EcoRegion=="North Sea", "EcoRegion"] <- "Greater North Sea"

# coerce some numerical variables
isa$SSB <- as.numeric(isa$SSB)
isa$F <- as.numeric(isa$F)
isa$FMSY <- as.numeric(isa$FMSY)

```

```

isa$Bpa <- as.numeric(isa$Bpa)
isa$Blim <- as.numeric(isa$Blim)
isa$MSYBtrigger <- as.numeric(isa$MSYBtrigger)
isa$MSYBescapement <- as.numeric(isa$MSYBescapement)

# consistency for FMSY when F reported has ratio
isa[isa$fishingPressureDescription == "Fishing Pressure: F/FMSY","FMSY"] <- 1
# drop "Fishing pressure: Relative" (relative to the mean, ICES dixit)
isa[isa$fishingPressureDescription == "Fishing pressure: Relative","FMSY"] <- NA

#####
# ICES Stock assessment units definition
#####
#-----
# get data
#-----
stkAreas <- xmlToDataFrame(
  getURL("http://vocab.ices.dk/services/pox/GetCodeList/ICES_STockCode")
)
stkAreas <- lapply(split(stkAreas, stkAreas$Key), function(x) try(doitAreas(x)))
stkAreas <- do.call("rbind", stkAreas)

#-----
# parse codes
#-----

# Subarea and Division
stkAreas$FAOArea <- 27
stkAreas$Subarea <- NA
stkAreas$Division <- NA
stkAreas$Subdivision <- NA

# Subarea codes in right order for parsing
sas <- c("XIV", "XIII", "XII", "XI", "IX", "X", "VIII", "VII", "VI", "IV", "V",
  "III", "II", "I")

rows <- seq(dim(stkAreas)[1])

for(i in sas) {
  # rows matching Subarea i
  idx <- grep(i, stkAreas$area[rows], fixed=TRUE)
  stkAreas[rows,]$Subarea[idx] <- i
  lst <- strsplit(sub(i, "", stkAreas[rows,]$area[idx]), "")
  stkAreas[rows,]$Division[idx] <- unlist(lapply(lst, "[", 1))
  stkAreas[rows,]$Subdivision[idx] <- unlist(lapply(lst, "[", 2))
  rows <- rows[!rows %in% rows[idx]]
}

# Baltic
idx <- !is.na(as.numeric(as.character(stkAreas$area)))
stkAreas[idx,"Subarea"] <- "III"
stkAreas[idx,"Division"] <- as.character(stkAreas[idx,"area"])
idx <- stkAreas$area %in% c("28-1", "28-2")
stkAreas[idx,"Subarea"] <- "III"
stkAreas[idx,"Division"] <- 28

```

```

stkAreas[idx,"Subdivision"] <- sub("28-", "", stkAreas[idx,"area"])

#####
# TAC units
#####
#-----
# merge areas and species definitions into TAC Quotas
#-----

# TAC Quotas
tac <- read.csv("../data/TacQuotas20160125095252.csv", sep=";", header=TRUE)

# Areas
area <- read.csv("../data/STOCKS_v3_4.tab", sep="\t", header=TRUE,
  stringsAsFactors=FALSE)
area$Area <- area$STOCK_ID
area$nc <- nchar(area$STOCK_ID)
area$Area <- substr(area$Area, 5, area$nc)
area$Description <- area$Stock_Area
area <- subset(area, Year_ID==2014)
area <- unique(area[,c("Area", "Description")])
area <- do.call("rbind", lapply(split(area, area$Area), "[", i=1, j=1:2))

# Bring area into tac
tac <- merge(tac, area[,c("Area", "Description")])

# Species
species <- read.csv("../data/species_headers_20160125.xls", sep="\t", header=TRUE)
colnames(species)[colnames(species) == "Description"] <- "species_desc"

tac <- merge(tac, species[,c("Species", "species_desc", "Latin.name")])

# We want tac$Stock.Group to be T-Baltic, T-WWN and T-DSS
tacsub <- tac[tac$Stock.Group %in% c("T-BALTIC", "T-WWN", "T-DSS"),]

#-----
# The breakdown of the management unit areas into FAO/ICES
# areas had to be done manually. The source data was in
# "tacDefs.csv" and the results in
# "TacQuotas20160125095252-AreasSelected_WWN_Baltic.csv".
#-----
# INPUT: CSV file of TAC areas
# Empty strings as NA

inp <- read.csv('../data/TacQuotas20160222-AreasSelected_WWN_Baltic_DSS.csv',
  stringsAsFactors=FALSE, na.strings="", sep=';')
# Drop NAs in VAR, SAD (all NAs in ICES1-18)
itac <- gather(inp, "VAR", "SAD", 13:30, na.rm=TRUE)
itac <- select(itac, Species, Area, Latin.name, SAD)

# HACK: Delete "NA" from Latin.name
itac$Latin.name[itac$Latin.name == "NA"] <- ""

# Subarea and Division

```

```

itac$FAOArea <- 27
itac$Subarea <- ""
itac$Division <- ""

# Subarea codes in right order for parsing
sas <- c("XIV", "XIII", "XII", "XI", "IX", "X", "VIII", "VII", "VI", "IV", "V",
        "III", "II", "I")
rows <- seq(dim(itac)[1])

for(i in sas) {
  # rows matching Subarea i
  idx <- grep(i, itac$SAD[rows], fixed=TRUE)
  itac[rows,]$Subarea[idx] <- i
  itac[rows,]$Division[idx] <- sub(i, "", itac[rows,]$SAD[idx])
  rows <- rows[!rows %in% rows[idx]]
}

# Divisions by Subarea
divs <- list(I=2, II=2, III=4, IV=3, V=2, VI=2, VII=10, VIII=5, IX=2, X=2,
            XI=0, XII=3, XIII=0, XIV=2)
divs <- lapply(divs, function(x) letters[-9][seq(length=x)])

# BUT ICES 22-32 for Baltic (III)
divs[['III']] <- as.character(seq(22,32))

# EXPAND all subarea divisions
idx <- itac$Division == ""
sub <- itac[idx,]
res <- vector('list', length=nrow(sub))

for (i in seq(nrow(sub))) {
  ds <- divs[[sub[i,'Subarea']]]
  res[[i]] <- suppressWarnings(cbind(sub[i, -7], Division=ds))
}
res <- Reduce('rbind', res)

# JOIN res and !sub
itac <- rbind(res, itac[!idx,])

# asterisk? special = T/F
itac$special <- grepl('*', itac$Area, fixed=TRUE)

# fix name
itac[itac$Latin.name=="Merlangius merlangus, Pollachius pollachius" &
      !is.na(itac$Latin.name),"Latin.name"] <- "Merlangius merlangus"

#=====
# Merging ICES and EU Mediterranean datasets
#=====
#-----
# Stock assessment summaries
#-----
sa <- isa

```

```

# fix ecoregion
sa[sa$EcoRegion %in% c("Bay of Biscay and Iberian Sea",
  "Celtic Sea and West of Scotland"), "EcoRegion"] <- "Western European"
sa[sa$EcoRegion=="Widely distributed and migratory stocks",
  "EcoRegion"] <- "Widely distributed"
sa[sa$EcoRegion %in% c("Iceland and East Greenland",
  "Barents Sea and Norwegian Sea", "Faroe Plateau Ecosystem"),
  "EcoRegion"] <- "Other"
# stocks in the western channel are wrongly classified in
# western waters, must be Greater North Sea
sa[grep("echw", sa$FishStockName), "EcoRegion"] <- "Greater North Sea"

# add Med
df0 <- sa[1:nrow(msa),]
df0[] <- NA
df0[,c("Year", "FishStockName", "StockDescription", "SSB", "F", "AssessmentYear", "FMSY",
  "SpeciesName", "landings")] <- msa[,c("year", "stk", "StockDescription", "SSB", "F",
  "asses_year", "Fref", "Scientific_name", "Landings")]
df0$EcoRegion <- "Mediterranean"
# all stocks in the list have analytical assessments
df0$fishingPressureDescription <- "Fishing Pressure: F"
sa <- rbind(sa, df0)

#####
# Filtering and processing data
#####
#=====
# Bref
#=====
# Blim << MSYBtrigger << Bpa as Bref
sa$Bref <- sa$Blim
sa$Bref[!is.na(sa$MSYBtrigger)] <- sa$MSYBtrigger[!is.na(sa$MSYBtrigger)]
sa$Bref[!is.na(sa$Bpa)] <- sa$Bpa[!is.na(sa$Bpa)]
# B escapment as Bref for relevant stocks
sa$Bref[!is.na(sa$MSYBescapement)] <- sa$MSYBescapement[!is.na(sa$MSYBescapement)]
sa$Bref <- as.numeric(sa$Bref)
# set 0 as NA
sa$Bref[sa$Bref==0] <- NA

#=====
# Fref
#=====
sa$Fref <- sa$FMSY
# no Fref f B escapment
sa$Fref[!is.na(sa$MSYBescapement)] <- NA
sa$Fref <- as.numeric(sa$Fref)
sa$Fref[sa$Fref==0] <- NA

#=====
# COMPUTE F/Fref and B/Bref | year + stock
#=====
sa <- transform(sa, indF = F/Fref, indB=SSB/Bref)
# in case of escapement strategy MSY evaluated by SSB ~ Blim/Bpa/etc
sa$indF[!is.na(sa$MSYBescapement)] <- sa$Bref[!is.na(sa$MSYBescapement)] /

```



```

sa$SSB[!is.na(sa$MSYBescapement)]
sa <- transform(sa, sfFind=!is.na(indF))

#=====
# COMPUTE SBL | year + FishStock
#=====
sa$SBL <- !(sa$indF > 1 | sa$indB < 1)
# if one is NA SBL can't be inferred
sa$SBL[is.na(sa$indF) | is.na(sa$indB)] <- NA

#=====
# Mapping management units (TAC or MLS) with stock
# assessment units
#-----
# ICES info
#-----
isu <- subset(stkAreas, stock %in% unique(sa[sa$sfFind,]$FishStockName))
# create genus field
isu$genus <- unlist(lapply(strsplit(as.character(isu$species), " "), "[", 1))

#-----
# TAC info
#-----
# remove special conditions and species NA
imu <- itac[!itac$special,]
imu <- imu[!is.na(imu$Latin.name),]
# some genus need correction
imu[imu$Latin.name == "Caproidae", "Latin.name"] <- "Capros"
imu[imu$Latin.name == "Lophiidae", "Latin.name"] <- "Lophius"
# create genus field
imu$genus <- unlist(lapply(strsplit(imu$Latin.name, " "), "[", 1))
# create tacUnit field
imu <- transform(imu, tacUnit = paste(Species, Area, sep=":"))
# remove TACs that are not set by the EU
v0 <- c("COD:2A3AX4", "COD:5W6-14", "COD:GRL1", "COD:GRL2", "COD:GRL3", "COD:GRL4",
      "HAD:2AC4.", "HAD:5BC6A.", "USK:1214EI", "USK:1214EI", "USK:1214EI", "USK:1214EI",
      "USK:1214EI", "USK:1214EI")
imu <- subset(imu, !(tacUnit %in% v0))

#-----
# merge
#-----
imu <- lapply(split(imu, imu$Latin.name), function(x){
  spp <- tolower(sub(" ", "", x$Latin.name[1]))
  aa <- unique(isu[tolower(sub(" ", "", isu$species)) == spp,
c("stock", "Subarea", "Division")])
  # need to deal with more than one stock assessment for a single tac unit
  aa <- cast(aa, Subarea + Division ~ ., paste, collapse=";", value="stock")
  aa <- as.data.frame(aa)
  names(aa) <- c("Subarea", "Division", "stock")
  # combine
  x <- merge(x, aa, all.x=TRUE)
  x[,"subareaAssessed"] <- FALSE

```

```

x[,"genusAssessed"] <- FALSE
x[x$Subarea %in% aa$Subarea,"subareaAssessed"] <- TRUE
xx <- x[!x$subareaAssessed,]
if(nrow(xx)> 1 & !all(xx$Latin.name %in% c("Pollachius pollachius", "Pollachius virens"))){
  xx$stock <- NULL
  gen <- tolower(xx$genus[1])
  aa <- unique(isu[tolower(isu$genus) == gen,c("stock","Subarea", "Division")])
  # need to deal with more than one stock assessment for a single tac unit
  aa <- cast(aa, Subarea + Division ~ ., paste, collapse=";", value="stock")
  aa <- as.data.frame(aa)
  names(aa) <- c("Subarea", "Division", "stock")
  xx <- merge(xx, aa, all.x=TRUE)
  xx[xx$Subarea %in% aa$Subarea,"subareaAssessed"] <- TRUE
  # in these cases the TAC unit combines spp so assessment is at genus level
  xx[xx$Subarea %in% aa$Subarea,"genusAssessed"] <- TRUE
  x <- rbind(x[x$subareaAssessed,],xx)
}
x[,"divisionAssessed"] <- !is.na(x$stock)
x
})

imu <- do.call("rbind", imu)

#####
# Merging ICES and EU Mediterranean datasets
#####
#-----
# Stock assessment coverage
#-----
# add EcoRegion
mu <- imu[,c("Latin.name", "genus", "Species", "FAOArea", "Subarea",
  "Division", "Area", "tacUnit", "subareaAssessed", "genusAssessed",
  "divisionAssessed", "stock")]
mu[, "EcoRegion"] <- "Other"
mu[mu$Subarea=="III", "EcoRegion"] <- "Baltic Sea"
mu[mu$Subarea=="IV" | (mu$Subarea=="III" & mu$Division=="a") | (mu$Subarea=="VII" &
  mu$Division=="d") | (mu$Subarea=="VII" &
  mu$Division=="e"), "EcoRegion"] <- "Greater North Sea"
mu[mu$Subarea %in% c("VI", "VII", "VIII", "IX"),
  "EcoRegion"] <- "Western European"
mu[mu$stock %in% unique(subset(isa,
  EcoRegion == "Widely distributed and migratory stocks")$FishStockName),
  "EcoRegion"] <- "Widely distributed"

df0 <- mu[1:nrow(mmu),]
df0$FAOArea <- 37
df0$EcoRegion <- "Mediterranean"
df0$genus <- df0$Division <- df0$divisionAssessed <- NA
df0[,c("Latin.name", "Species", "Subarea", "tacUnit", "subareaAssessed",
  "genusAssessed", "stock")] <- mmu[,c("Scientific_name", "Stock", "Area",
  "manUnit", "Assessed", "genusAssessed", "Stock_Assessed_GSAs")]
# note that in the Med the management area matches the FAO subarea (GSA)
df0$Area <- df0$Subarea
mu <- rbind(mu, df0)

```

```

# fix some names to be more explicit and/or short
names(mu) <- c("spp.latin", "genus", "spp.fao", "FAOArea", "subarea",
  "division", "manArea", "manUnit", "subareaAssessed", "genusAssessed",
  "divisionAssessed", "stockUnit", "EcoRegion")

#=====
# Clean and save
#=====

save(mu, sa, file="data.RData")

```

### 5.3 Northeast Atlantic (ICES area)

```

# remove some stocks and years
# note that lin-icel and her-noss are widely distributed stock and end up on the list
# other noneu stocks will be dropped by not selecting eco region "other"
stks <- unique(as.character(mu$stockUnit))
stks <- unlist(strsplit(stks, ";"))
stks <- stks[!is.na(stks) & !(stks %in% c("lin-icel", "her-noss"))]
# only EU areas
ieu <- c("Western European", "Widely distributed", "Baltic Sea", "Greater North Sea")
# sa in time
saeu <- sa[!is.na(sa$indF) & sa$EcoRegion %in% ieu & sa$Year>=2003
  & sa$Year<2015 & sa$FishStockName %in% stks,]
ggplot(saeu %>%
  group_by(Year) %>% summarise(stk=length(FishStockName)),
  aes(x=Year, y=stk)) + geom_line() + ylab("No. of stocks") +
  xlab("") + ylim(c(0,75)) + sc
nStks <- rbind_list(
  # find by year
  saeu %>% group_by(year=Year) %>%
  summarise(Region='ALL', N=length(FishStockName)),
  # find by region
  saeu %>% group_by(Region=EcoRegion, year=Year) %>%
  summarise(N=length(FishStockName)))

```

#### 5.3.1 Number of stocks where fishing mortality exceeds $F_{MSY}$

```

fInda <- rbind_list(
  # find by year
  saeu %>% group_by(year=Year) %>%
  summarise(Region='ALL', N=sum(indF>1, na.rm=TRUE)),
  # find by region
  saeu %>% group_by(Region=EcoRegion, year=Year) %>%
  summarise(N=sum(indF>1, na.rm=TRUE)))
ggplot(filter(fInda, Region=='ALL'), aes(x=year, y=N)) + geom_line() +
  expand_limits(y=0) + geom_point(aes(x=2003, y=N[1])) +
  geom_point(aes(x=2014, y=N[length(N)]), size=2) +
  ylab("No. of stocks") + xlab("") + ylim(c(0,75)) + sc
ggplot(filter(fInda, Region != 'ALL'), aes(x=year, y=N)) + geom_line() +
  facet_wrap(~Region, scales='free') +

```

```
ylab("No. of stocks") + xlab("") +
sc + ylim(0, NA)
```

### 5.3.2 Number of stocks where fishing mortality is equal to or less than $F_{MSY}$

```
fIndb <- rbind_list(
  # find by year
  saeu %>% group_by(year=Year) %>% summarise(Region='ALL',
    N=sum(indF<=1, na.rm=TRUE)),
  # find by region
  saeu %>% group_by(Region=EcoRegion, year=Year) %>%
    summarise(N=sum(indF<=1, na.rm=TRUE)))
ggplot(filter(fIndb, Region=='ALL'), aes(x=year, y=N)) + geom_line() +
  expand_limits(y=0) + geom_point(aes(x=2003, y=N[1])) +
  geom_point(aes(x=2014, y=N[length(N)]), size=2) +
  ylab("No. of stocks") + xlab("") + ylim(c(0,75)) + sc
ggplot(filter(fIndb, Region != 'ALL'), aes(x=year, y=N)) + geom_line() +
  facet_wrap(~Region, scales='free') +
  ylab("No. of stocks") + xlab("") +
  sc + ylim(0, NA)
```

### 5.3.3 Number of stocks outside safe biological limits

```
fIndc <- rbind_list(
  # find by year
  saeu %>% group_by(year=Year) %>% summarise(Region='ALL',
    N=sum(!SBL, na.rm=TRUE)),
  # find by region
  saeu %>% group_by(Region=EcoRegion, year=Year) %>% summarise(N=sum(!SBL,
    na.rm=TRUE)))
ggplot(filter(fIndc, Region=='ALL'), aes(x=year, y=N)) + geom_line() +
  expand_limits(y=0) + geom_point(aes(x=2003, y=N[1])) +
  geom_point(aes(x=2014, y=N[length(N)]), size=2) +
  ylab("No. of stocks") + xlab("") + ylim(c(0,75)) + sc
ggplot(filter(fIndc, Region != 'ALL'), aes(x=year, y=N)) + geom_line() +
  facet_wrap(~Region, scales='free') +
  ylab("No. of stocks") + xlab("") +
  sc + ylim(0, NA)
```

### 5.3.4 Number of stocks inside safe biological limits

```
fIndd <- rbind_list(
  # find by year
  saeu %>% group_by(year=Year) %>% summarise(Region='ALL',
    N=sum(SBL, na.rm=TRUE)),
  # find by region
  saeu %>% group_by(Region=EcoRegion, year=Year) %>% summarise(N=sum(SBL,
    na.rm=TRUE)))
ggplot(filter(fIndd, Region=='ALL'), aes(x=year, y=N)) + geom_line() +
  expand_limits(y=0) + geom_point(aes(x=2003, y=N[1])) +
  geom_point(aes(x=2014, y=N[length(N)]), size=2) +
  ylab("No. of stocks") + xlab("") + ylim(c(0,75)) + sc
```

```
ggplot(filter(fIndd, Region != 'ALL'), aes(x=year, y=N)) + geom_line() +
  facet_wrap(~Region, scales='free') +
  ylab("No. of stocks") + xlab("") +
  sc + ylim(0, NA)
```

### 5.3.5 Annual mean value of $F/F_{MSY}$

```
idx <- saeu$fishingPressureDescription %in%
  c("Fishing Pressure: F/FMSY", "Fishing Pressure: F")
idx <- idx & is.na(saeu$MSYBescapement)

fInde <- rbind_list(
  # find by year
  saeu[idx,] %>% group_by(year=Year) %>% summarise(Region='ALL',
    F=mean(indF, na.rm=TRUE)),
  # find by region
  saeu[idx,] %>% group_by(Region=EcoRegion,
    year=Year) %>% summarise(F=mean(indF, na.rm=TRUE)))
ggplot(filter(fInde, Region=='ALL'), aes(x=year, y=F)) + geom_line() +
  expand_limits(y=0) + geom_point(aes(x=2003, y=F[1])) +
  geom_point(aes(x=2014, y=F[length(F)]), size=2) +
  geom_hline(yintercept = 1, linetype=2) +
  ylab(expression(F/F[MSY])) + xlab("") + sc
ggplot(filter(fInde, Region != 'ALL'), aes(x=year, y=F)) + geom_line() +
  facet_wrap(~Region, scales='free') +
  ylab(expression(F/F[MSY])) + xlab("") +
  geom_hline(aes(yintercept=1), linetype=2) + sc
ggplot(filter(fInde, Region=='ALL'), aes(x=year, y=F)) + geom_line() +
  expand_limits(y=0) + geom_point(aes(x=2003, y=F[1])) +
  geom_point(aes(x=2014, y=F[length(F)]), size=2) +
  geom_hline(yintercept = 1, linetype=2) +
  ylab(expression(F/F[MSY])) + xlab("") +
  geom_point(data=saeu[idx,], aes(x=Year, y=indF), alpha=0.2,
    shape=19, size=2) + sc
ifit <- glmer(indF ~ factor(Year) + (1|FishStockName), data = saeu[idx,],
  family = Gamma("log"))
ifit.bs <- bootMer(ifit, FUN=function(x) predict(x, re.form=~0, type="response"), 500,
  parallel="multicore", ncpus=20, seed=1234)
ifitm <- ifit.bs$t[,1:12]
ifitq <- apply(ifitm, 2, quantile, c(0.025, 0.25, 0.50, 0.75, 0.975), na.rm=TRUE)
ifitq <- cbind(Year=unique(saeu[idx,]$Year), as.data.frame(t(ifitq)))
ggplot(ifitq, aes(x=Year)) +
  geom_ribbon(aes(ymin = `2.5%`, ymax = `97.5%`, fill="gray", alpha=0.60) +
  geom_ribbon(aes(ymin = `25%`, ymax = `75%`, fill="gray", alpha=0.95) +
  geom_line(aes(y=`50%`)) + expand_limits(y=0) +
  geom_point(aes(x=Year[1], y=`50%`[1])) +
  geom_point(aes(x=Year[length(Year)], y=`50%`[length(`50%`)]), size=2) +
  geom_hline(yintercept = 1, linetype=2) +
  ylab(expression(F/F[MSY])) + xlab("") +
  theme(legend.position = "none") + sc
```

### 5.3.6 Indicators of changes in advice coverage

```
# coastal EU waters
mueu <- mu[mu$subarea %in% c("III", "IV", "VI", "VII", "VIII",
  "IX") & mu$manArea != "04-N.", ]
i41a <- lapply(split(mueu, mueu$manUnit), function(x) {
  y <- x[1, c("spp.latin", "manUnit", "subareaAssessed", "EcoRegion")]
  y$subareaAssessed <- sum(x$subareaAssessed) > 0
  y
})
i41a <- do.call("rbind", i41a)
psa <- mean(i41a$subareaAssessed)
nsa <- sum(i41a$subareaAssessed)
n <- nrow(i41a)

# number of stocks with B/Bref
saeu. <- sa[!is.na(sa$indB) & sa$EcoRegion %in% ieu & sa$Year ==
  2014 & sa$FishStockName %in% stks, ]
nf <- nrow(saeu[saeu$Year == 2014, ])
nb <- nrow(saeu.)

df0 <- data.frame(c(nf, nb), c(n, n), c(psa, nb/nf * psa))
dimnames(df0) <- list(c("Stocks with F/FMSY estimate", "Stocks with B/Bref estimate"),
  c("No", "No TACs", "Fraction of TACs with assessments"))
```

## 5.4 Mediterranean (European area)

### 5.4.1 Sampling frame

```
ggplot(sam %>% group_by(Year) %>% summarise(stk = length(FishStockName)),
  aes(x = Year, y = stk)) + geom_line() + ylab("No. of stocks") +
  xlab("") + ylim(c(0, 50)) + sc
```

### 5.4.2 Indicators of management performance

```
sam <- sa[!is.na(sa$indF) & sa$EcoRegion=="Mediterranean" & sa$Year>=2003 &
  sa$Year<2014 & sa$FishStockName %in% stks & sa$AssessmentYear %in% c("2015", "2014", "2013"),]
mnStks <- sam %>% group_by(Year) %>% summarise(stk=length(FishStockName))
names(mnStks) <- c('year', 'N')
#=====
# Number of stocks where fishing mortality exceeds Fmsy
#=====
mInda <- rbind_list(
  # find by year
  sam %>% group_by(year=Year) %>%
  summarise(Region='ALL', N=sum(indF>1, na.rm=TRUE)))

mt31 <- dcast(filter(mInda, year > 2002), Region~year, value.var='N')
mt31 <- cbind(Indicator="No. stocks F > FMSY", mt31[,-1])

#=====
# Number of stocks where fishing mortality is equal to or less than Fmsy
```

```

#=====
mIndb <- rbind_list(
  # find by year
  sam %>% group_by(year=Year) %>% summarise(Region='ALL',
    N=sum(indF<=1, na.rm=TRUE)))

mt32 <- dcast(filter(mIndb, year > 2002), Region~year, value.var='N')
mt32 <- cbind(Indicator="No. stocks F <= FMSY", mt32[,-1])

#=====
# Number of stocks outside safe biological limits
#=====
mIndc <- rbind_list(
  # find by year
  sam %>% group_by(year=Year) %>% summarise(Region='ALL',
    N=sum(!SBL, na.rm=TRUE)))

mt33 <- dcast(filter(mIndc, year > 2002), Region~year, value.var='N')
mt33 <- cbind(Indicator="No. stocks outside SBL", mt33[,-1])

#=====
# Number of stocks inside safe biological limits
#=====
mIndd <- rbind_list(
  # find by year
  sam %>% group_by(year=Year) %>% summarise(Region='ALL',
    N=sum(SBL, na.rm=TRUE)))

mt34 <- dcast(filter(mIndd, year > 2002), Region~year, value.var='N')
mt34 <- cbind(Indicator="No. stocks inside SBL", mt34[,-1])

#=====
# Annual mean value of $F / F_{MSY}$
#=====
idx <- sam$fishingPressureDescription %in% c("Fishing Pressure: F/FMSY", "Fishing Pressure: F")
idx <- idx & is.na(sam$MSYBescapement)

mInde <- rbind_list(
  # find by year
  sam[idx,] %>% group_by(year=Year) %>% summarise(Region='ALL',
    F=mean(indF, na.rm=TRUE)))

mt35 <- dcast(filter(mInde, year > 2002), Region~year, value.var='F')
mt35 <- cbind(Indicator="Mean value F/FMSY", mt35[,-1])

# No. of stocks with SA

fIndf <- rbind_list(
  # find by year
  sam[idx,] %>% group_by(year=Year) %>% summarise(Region='ALL',
    N=length(indF)))

mt30 <- dcast(filter(fIndf, year > 2002), Region~year, value.var='N')
mt30 <- cbind(Indicator="No. stocks assessed", mt30[,-1])

```

### 5.4.3 Annual mean value of $F/F_{MSY}$ - model based indicator

```
mfit <- glmer(indF ~ factor(Year) + (1 | FishStockName), data = sam[idx,
  ], family = Gamma("log"))
sam[idx, "indFm"] <- predict(mfit, re.form = ~0, type = "response")
mfit.bs <- bootMer(mfit, FUN = function(x) predict(x, re.form = ~0,
  type = "response"), 500, parallel = "multicore", ncpus = 20,
  seed = 1234)
mfitm <- mfit.bs$t[, 1:11]
mfitq <- apply(mfitm, 2, quantile, c(0.025, 0.25, 0.5, 0.75,
  0.975), na.rm = TRUE)
mfitq <- cbind(Year = unique(sam[idx, ]$Year), as.data.frame(t(mfitq)))
ggplot(mfitq, aes(x = Year)) + geom_ribbon(aes(ymin = `2.5%`,
  ymax = `97.5%`), fill = "gray", alpha = 0.6) + geom_ribbon(aes(ymin = `25%`,
  ymax = `75%`), fill = "gray", alpha = 0.95) + geom_line(aes(y = `50%`)) +
  expand_limits(y = 0) + geom_point(aes(x = Year[length(Year)],
  y = `50%`[length(`50%`)]), size = 2) + geom_hline(yintercept = 1,
  linetype = 2) + ylab(expression(F/F[MSY])) + xlab("") + theme(legend.position = "none") +
  sc
```



## **Appendix B: Common Fisheries Policy Monitoring - Protocol for computing indicators**



JRC SCIENCE FOR POLICY REPORT

# Common Fisheries Policy Monitoring Protocol for computing indicators

Ernesto Jardim, Iago Mosqueira, Giacomo  
Chato Osio and Finlay Scott

2015

This publication is a Science for Policy report by the Joint Research Centre, the European Commission's in-house science service. It aims to provide evidence-based scientific support to the European policy-making process. The scientific output expressed does not imply a policy position of the European Commission. Neither the European Commission nor any person acting on behalf of the Commission is responsible for the use which might be made of this publication.

**JRC Science Hub**

<https://ec.europa.eu/jrc>

JRC 98562

EUR 27566 EN

PDF ISBN 978-92-79-53605-2 ISSN 1831-9424 doi:10.2788/560953 LB-NA-27566-EN-N

---

© European Union, 2015

Reproduction is authorised provided the source is acknowledged.

How to cite: Ernesto Jardim, Iago Mosqueira, Giacomo Chato Osio and Finlay Scott; Common Fisheries Policy Monitoring Protocol for computing indicators; EUR 27566 EN; doi:10.2788/560953

Abstract:

**Common Fisheries Policy Monitoring - Protocol for computing indicators**

This document presents the protocol to compute indicators for monitoring the Common Fisheries Policy. A set of indicators both design-based and model-based are described mathematically. The list of stocks that should form the dataset on which the indicators are computed is also described as well as a set of rules to update the stocks' lists when needed. The protocol was presented and approved by the STECF's 2015 winter plenary (STECF-PLN-15-03).

# Common Fisheries Policy Monitoring Protocol for computing indicators

Ernesto Jardim<sup>1</sup> (ernesto.jardim@jrc.ec.europa.eu)  
Iago Mosqueira<sup>1</sup> (iago.mosqueira@jrc.ec.europa.eu)  
Giacomo Chato-Osio<sup>1</sup> (giacomo-chato.osio@jrc.ec.europa.eu)  
Finlay Scott<sup>1</sup> (finlay.scott@jrc.ec.europa.eu)

<sup>1</sup>European Commission, Joint Research Centre (JRC), Institute of the Protection and Security of the Citizen (IPSC), Maritime Affairs Unit G03, Via Enrico Fermi 2749, 21027 Ispra (VA), Italy

# Contents

<b>1</b>	<b>Introduction</b>	<b>3</b>
1.1	Scope	4
1.2	Data sources	4
<b>2</b>	<b>Selection of stocks</b>	<b>5</b>
2.1	List of stocks to monitor	5
2.2	Updating rules	5
<b>3</b>	<b>Indicators of management performance</b>	<b>5</b>
3.1	Number of stocks where fishing mortality exceeds $F_{msy}$	6
3.2	Number of stocks where fishing mortality is equal to or less than $F_{msy}$	6
3.3	Number of stocks outside safe biological limits	6
3.4	Number of stocks inside safe biological limits	6
3.5	Annual mean value of $F/F_{MSY}$	6
<b>4</b>	<b>Indicators of changes in advice coverage</b>	<b>7</b>
4.1	Number of stocks for which estimates exist of $(\frac{F}{F_{MSY}})$	7
4.2	Number of stocks for which estimates exist of $(\frac{B}{B_{REF}})$	7
<b>5</b>	<b>Transparency</b>	<b>7</b>

# 1 Introduction

The monitoring of the Common Fisheries Policy (CFP, Reg (EU) 1380/2013) implementation is of utmost importance for the European Union (EU), European Commission (EC) and its Directorate-General for Maritime Affairs and Fisheries (DG MARE).

The EC's Scientific, Technical and Economic Committee for Fisheries (STECF), as the major scientific advisory body on fisheries policy to the EC, has received the task of reporting on the CFP implementation through the publication of a series of indicators.

To make the process as consistent as possible the following set of rules were developed to serve as the protocol for computing the required indicators, this way contributing to the transparency of the process.

The protocol is split in three sections:

1. Selection of stocks - describe the current list of stocks used to compute the indicators and updating rules;
2. Indicators of management performance - description of the indicators, computation and presentation;
3. Indicators of changes in advice coverage - description of the indicators, computation and presentation.

The ToRs given to [STECF 15-04](#) set the basis of the work carried out to build the indicators, which are transcribed below for reference:

1. Determine, on the basis of the most recently available fish stock assessments, a list of fish stocks for monitoring the past performance of the Common Fisheries Policy according to the following criteria:
  - Quantitative assessments as used in the provision of formal quantitative advice on fishing mortality with respect to  $F_{MSY}$ .
  - Stocks in European Union waters, shared stocks which are jointly managed by the EU with nearby states, and stocks in international waters or third country waters that are fished by the EU and managed by an RFMO where the EU is a member of the decision making body.
2. For stocks within the sampling frame defined above, calculate the following annual quantities as far back in time as the data remain representative:
  - Number of stocks where fishing mortality exceeds  $F_{MSY}$ <sup>1</sup>
  - Number of stocks where fishing mortality is equal to or less than  $F_{MSY}$ <sup>2</sup>
  - Number of stocks outside safe biological limits
  - Number of stocks inside safe biological limits
  - The arithmetic average value of  $F/F_{MSY}$
  - Number of stocks for which the state of the stock is unknown with respect to safe biological limits

For the purposes of this term of reference, "outside safe biological limits" means that  $SSB$  is less than  $B_{PA}$  (where  $B_{PA}$  is defined), OR  $F$  is greater than  $F_{PA}$  (where  $F_{PA}$  is defined) for the year in question.

Estimates should be provided separately for the Baltic Sea, the North Sea, Western Waters, for each area covered by RFMOs other than NEAFC. Parameter  $F$  should also be reported for the combined area of the Baltic Sea, North Sea and Western Waters. The list of stocks should be provided together with a mention of whether the stock is fished above or below  $F_{MSY}$ .

---

<sup>1</sup>Including, for short-lived species managed according to a biomass-escapement strategy, the number of stocks where the resulting biomass was less than the escapement biomass corresponding to MSY fishing.

<sup>2</sup>Including, for short-lived species managed according to a biomass-escapement strategy, the number of stocks where the resulting biomass was equal to or higher than the escapement biomass corresponding to MSY fishing.

3. For the purpose of assessing changes over time in the coverage of advice on TACs with respect to scientific advice concerning the northeast Atlantic:
  - define a sampling frame based on a large subset of TACs of EU interest that is stable over time;
  - assess the number and proportion of those TACs that are subject to scientific advice concerning:
    - the fishing mortality compared to  $F_{MSY}$
    - the state with respect to Safe Biological Limits, as defined above

For the purposes of this exercise, a group of TACs covering one biological stock should be counted once only. For a TAC which covers several stocks, the biological state of the most abundant stock (by comparison with other stocks over an extended and representative period) should be taken into account.

The Commission services will provide STECF with an initial analysis for the purposes of the assessment under point 3.

## 1.1 Scope

The monitoring of the CFP should cover all areas where fleets operate under the flag of any EU member state. However, due to limitations on data and the mitigated responsibility of the EU on management decisions on waters outside the EU EEZ (Exclusive Economic Zone), the analysis will focus on stocks within the EU EEZ and some important shared stocks.

The analysis will have two perspectives, a global EU level lookout complemented with a regional overview, where the indicators are computed at a regional level for the:

- Baltic Sea
- Greater North Sea
- Western European
- Mediterranean
- Black Seas
- Widely distributed

## 1.2 Data sources

All indicators are computed using results from single species quantitative stock assessments. In detail, time series of fishing mortality, spawning stock biomass and the adopted reference points are required from ICES<sup>3</sup>, GFCM<sup>4</sup> and STECF.

Results from surplus production models and delay difference models, which are mostly reported as ratios between  $F$  and  $F_{MSY}$  and/or  $B$  over  $B_{MSY}$ , are also included in the analysis.

Results from pseudo-cohort analysis are not included. These models don't estimate time series of fishing mortality or spawning stock biomass.

---

<sup>3</sup>International Council for the Exploration of the Sea

<sup>4</sup>General Fisheries Commission for the Mediterranean

## 2 Selection of stocks

### 2.1 List of stocks to monitor

The list of stocks to be used for computing the indicators, has to include those that are subject to direct management from the EU, as such better reflecting changes in stock status due to the CFP implementation.

Because of the differences in the nature and availability of data and information in different regions, region-specific lists of stocks were adopted.

The lists of stocks are:

- Northeast Atlantic (FAO area 27) - The list of stocks comprises all stocks subject to a TAC.
- Mediterranean and Black Seas (FAO area 37) - The list of stocks comprises all stocks subject to a minimum conservation reference size.

For the indicator "Annual mean value of  $F/F_{MSY}$ " (Section 3.5), stocks managed under escapement strategies and stocks for which fishing mortality was reported as a harvest rate are not included.

### 2.2 Updating rules

Due to changes in scientific knowledge, mostly related with spatial boundaries of stock units, the list of stocks may need to be adjusted in the future. These changes can have an impact on the quantification of the effects of the CFP's implementation. Although the impact is expected to be small as stock units changes shouldn't be numerous, and shouldn't unduly affect the overall perspective on trends in time of the indicators.

The following rules should be used to update the sampling frames:

- The updates consider the stock units existing in the reported year. Exploratory assessments or assessments not yet approved by the advisory bodies are not considered.
- When several stocks are merged in a single stock, the individual stocks must be removed from the list and the new stock added.
- When a stock is split in two (or more), the aggregated stock must be removed and the new ones added to the list.
- Stocks that cross regions will be allocated to the region where most of the stock's biomass exists.

## 3 Indicators of management performance

The analysis will use the following definitions:

- $f$  represents fishing mortality;
- $b$  represents biomass or spawning stock biomass;
- $F^{MSY}$  represents fishing mortality that produces catches at the level of  $MSY$  in an equilibrium situation, or a proxy;
- $B^{REF}$  the biomass reference value, *e.g.* the biomass that produces  $MSY$  when fished at  $F^{MSY}$ , but also any other relevant proxy considered by the scientific advice body;
- indices:
  - $j = 1 \dots N$  indexes stocks where  $N$  is the number of stocks in the sampling frame;
  - $t = 1 \dots T$  indexes years where  $T$  is the number of years in the reported time series;



- operations:
  - $\vee$  stands for "or" in boolean logic;
  - $\wedge$  stands for "and" in boolean logic;
- models:
  - $u$  is a random effect;
  - $s$  is a thin plate regression spline;
  - $y$  is a fixed effect on year.

### 3.1 Number of stocks where fishing mortality exceeds Fmsy

$$I_t^1 = \sum_{j=1}^{j=N} (f_{jt} > F_j^{MSY})$$

### 3.2 Number of stocks where fishing mortality is equal to or less than Fmsy

$$I_t^2 = \sum_{j=1}^{j=N} (f_{jt} \leq F_j^{MSY})$$

### 3.3 Number of stocks outside safe biological limits

$$I_y^3 = \sum_{j=1}^{j=N} (f_{jt} > F_j^{MSY} \vee b_{jt} < B_j^{REF})$$

### 3.4 Number of stocks inside safe biological limits

$$I_t^4 = \sum_{j=1}^{j=N} (f_{jt} \leq F_j^{MSY} \wedge b_{jt} \geq B_j^{REF})$$

### 3.5 Annual mean value of $F/F_{MSY}$

This indicator can have two forms, a design-based form

$$I_t^5 = N^{-1} \sum_{j=1}^{j=N} \frac{f_{jt}}{F_j^{MSY}}$$

or a model-based form, build using a LMM<sup>5</sup>. The indicator is build using the model predictions to compute the values of  $F/F_{MSY}$ .

$$z_{jt} = \frac{f_{jt}}{F_{MSY}}$$

$$z_{jt} = \beta_0 + y_t + u_j + \sigma_{jt}^2$$

This model was tested in a simulation study<sup>6</sup> and in an application to Mediterranean stocks<sup>7</sup>. The tests showed that the chosen model was the stablest estimating the mean.

<sup>5</sup>Linear Mixed Model

<sup>6</sup>Coilin Minto. 2015. Testing model based indicators for monitoring the CFP performance. Ad-hoc contract report. pp

14

<sup>7</sup>Chato-Osio, G., Jardim, E., Minto, C., Scott, F. and Patterson, K. 2015. Model based CFP indicators,  $F/F_{msy}$  and SSB. Mediterranean region case study. JRC Technical Report No XX, pp 26.

## 4 Indicators of changes in advice coverage

### 4.1 Number of stocks for which estimates exist of $(\frac{F}{F^{MSY}})$

$$I_t^6 = \sum_{j=1}^{j=N} (\frac{f_{jt}}{F_j^{MSY}} > 0 \wedge \frac{f_{jt}}{F_j^{MSY}} < \infty)$$

### 4.2 Number of stocks for which estimates exist of $(\frac{B}{B^{REF}})$

$$I_t^7 = \sum_{j=1}^{j=N} (\frac{b_{jt}}{B_j^{REF}} > 0 \wedge \frac{b_{jt}}{B_j^{REF}} < \infty)$$

## 5 Transparency

Changes or additions to this protocol shall be approved by STECF.

To promote transparency of scientific advice and allow the public in general and stakeholders in particular, to have access to the data and analysis carried out, all code and data must be published online once approved by STECF.

Europe Direct is a service to help you find answers to your questions about the European Union  
Free phone number (\*): 00 800 6 7 8 9 10 11  
(\* ) Certain mobile telephone operators do not allow access to 00 800 numbers or these calls may be billed.

A great deal of additional information on the European Union is available on the Internet.  
It can be accessed through the Europa server <http://europa.eu>

### **How to obtain EU publications**

Our publications are available from EU Bookshop ([http://publications.europa.eu/howto/index\\_en.htm](http://publications.europa.eu/howto/index_en.htm)), where you can place an order with the sales agent of your choice.

The Publications Office has a worldwide network of sales agents.  
You can obtain their contact details by sending a fax to (352) 29 29-42758.

## References

European Parliament and Council of the European Union. 2002a. “Regulation (EU) No 1380/2013 of the European Parliament and of the Council of 11 December 2013 on the Common Fisheries Policy, Amending Council Regulations (EC) No 1954/2003 and (EC) No 1224/2009 and Repealing Council Regulations (EC) No 2371/2002 and (EC) No 639/2004 and Council Decision 2004/585/EC.”

———. 2002b. “Regulation (EU) No 1380/2013 of the European Parliament and of the Council of 11 December 2013 on the Common Fisheries Policy, Amending Council Regulations (EC) No 1954/2003 and (EC) No 1224/2009 and Repealing Council Regulations (EC) No 2371/2002 and (EC) No 639/2004 and Council Decision 2004/585/EC.”

Jardim, Ernesto, Iago Mosqueira, Giacomo Chato Osio, and Finlay Scott. 2015. “Common Fisheries Policy Monitoring - Protocol for computing indicators.” Publications Office of the European Union, Luxembourg, EUR 27566 EN, JRC 98562, 12 pp.

STECF. 2014. “Reporting needs under the new Common Fisheries Policy (STECF-14-23).” Publications Office of the European Union, Luxembourg, EUR 27026 EN, JRC 93936, 61 pp.

———. 2015a. “50th Plenary Meeting Report (PLEN-15-03).” Publications Office of the European Union, Luxembourg, EUR 27602 EN, JRC 98672, 90 pp.

———. 2015b. “Monitoring the performance of the Common Fisheries Policy (STECF-15-04).” Publications Office of the European Union, Luxembourg, EUR 27152 EN, JRC 95185, 36 pp.

Europe Direct is a service to help you find answers to your questions about the European Union  
Freephone number (\*): 00 800 6 7 8 9 10 11

(\*): Certain mobile telephone operators do not allow access to 00 800 numbers or these calls may be billed.

A great deal of additional information on the European Union is available on the Internet.  
It can be accessed through the Europa server <http://europa.eu>.

#### How to obtain EU publications

Our publications are available from EU Bookshop ([http://publications.europa.eu/howto/index\\_en.htm](http://publications.europa.eu/howto/index_en.htm)),  
where you can place an order with the sales agent of your choice.

The Publications Office has a worldwide network of sales agents.  
You can obtain their contact details by sending a fax to (352) 29 29-42758.

#### European Commission

EUR 27758 EN – Joint Research Centre – Institute for the Protection and Security of the Citizen  
Title: Reports of the Scientific, Technical and Economic Committee for Fisheries - Monitoring the performance of the Common  
Fisheries Policy (STECF-16-05) – CORRIGENDUM to STECF-16-03.

#### Authors:

##### STECF members:

Graham, N., J., Abella, J. A., Andersen, J., Bailey, N., Bertignac, M., Cardinale, M., Curtis, H., Daskalov, G., Delaney, A.,  
Döring, R., Garcia Rodriguez, M., Gascuel, D., Gustavsson, T., Jennings, S., Kenny, A., Kraak, S., Kuikka, S., Malvarosa, L.,  
Martin, P., Murua, H., Nord, J., Nowakowski, P., Prellezo, R., Sala, A., Scarcella, G., Somarakis, S., Stransky, C., Theret, F.,  
Ulrich, C., Vanhee, W. & Van Oostenbrugge, H.

##### Ad hoc Expert group members:

Casey, J., Jardim, E., Mosqueira, I., Osio, G.C., Scott, F.

Luxembourg: Publications Office of the European Union

2016 – 60 pp. – 21 x 29.7 cm

EUR – Scientific and Technical Research series – 1831-9424

ISBN 978-92-79-57604-1

doi:10.2788/38324

## STECF

The Scientific, Technical and Economic Committee for Fisheries (STECF) has been established by the European Commission. The STECF is being consulted at regular intervals on matters pertaining to the conservation and management of living aquatic resources, including biological, economic, environmental, social and technical considerations.

## JRC Mission

As the Commission's in-house science service, the Joint Research Centre's mission is to provide EU policies with independent, evidence-based scientific and technical support throughout the whole policy cycle.

Working in close cooperation with policy Directorates-General, the JRC addresses key societal challenges while stimulating innovation through developing new methods, tools and standards, and sharing its know-how with the Member States, the scientific community and international partners.

*Serving society*

*Stimulating innovation*

*Supporting legislation*

